

2021
2022

CHIBA
UNIVERSITY



CHIBA UNIVERSITY

Contents

01 Introduction

01-1	A Message from the President	3
01-2	Chiba University Charter	4
01-3	Chiba University Aspirations	5
01-4	Chiba University Facts at a Glance	6

02 Topic

02-1	Enhanced Network for Global Innovative Education —ENGINE—	9
02-2	Top Global University Project	9
02-3	Inter-University Exchange Project	10
02-4	Frontier Science Program Early Enrollment	10
02-5	Institute for Global Prominent Research	11
02-6	Inohana Campus High Functionality Initiatives and Inohana IPE	11
02-7	Academic Research & Innovation Management Organization (IMO)	12
02-8	SDGs and ISO 14001 (Environmental Management System)	12

03 Undergraduate & Graduate

03-1	Undergraduate School	14
	College of Liberal Arts and Sciences	
	Faculty of Letters	
	Faculty of Law, Politics and Economics	
	Faculty of Education	
	Faculty of Science	
	Faculty of Engineering	
	Faculty of Horticulture	
	School of Medicine	
	Faculty of Pharmaceutical Sciences	
	School of Nursing	
03-2	Graduate School	15
	Graduate School of Humanities and Studies on Public Affairs	
	Law School	
	Graduate School of Education	
	Graduate School of Science and Engineering	
	Graduate School of Horticulture	
	Graduate School of Medical and Pharmaceutical Sciences	
	Graduate School of Nursing	
	Global Degree Program of Global and Transdisciplinary Studies	

04 Center

04-1	University Library / Academic Link Center.....	17
04-2	Center for Education and Research	18
	Center for Environmental Remote Sensing (CEReS)	
	Medical Mycology Research Center (MMRC)	
	Center for Analytical Instrumentation	
	Institute of Management and Information Technologies (IMIT)	
	Center for Frontier Science	
	Center for Relational Studies on Global Crises	
	Marine Biosystems Research Center	
	Soft Molecular Activation Research Center (SMARC)	
	International Center for Hadron Astrophysics (ICEHAP)	
	Molecular Chirality Research Center (MCRC)	
	Design Research Institute (dri)	
	Center for Frontier Medical Engineering	
	Center for Environment, Health and Field Sciences	
	Biomedical Research Center	
	Center for Forensic Mental Health	
	Center for Preventive Medical Sciences	
	Future Medicine Research Center (FMRC)	
	Research Center for Regenerative Therapeutics	
	Research Center for Child Mental Development	
	Plant Molecular Science Center	
	Radioisotope Research Center	
04-3	University Hospital	20

05 Internationalization

05-1	Overseas Centers / Partner Universities and Institutions	22
05-2	International Support Desk (ISD)	24
05-3	English House	24

06 Access

06-1	Location and Transportation Map	26
06-2	Directions	27

- 
- An aerial photograph of the Chiba University campus. In the foreground, a large, modern building with a grey facade and a flat roof is visible, featuring a cluster of air conditioning units on its roof. The building is surrounded by lush green trees. In the background, a dense urban landscape of Chiba City is visible, with various residential and commercial buildings, and the city skyline extending towards the horizon under a clear blue sky.
- 01-1** A Message from the President
 - 01-2** Chiba University Charter
 - 01-3** Chiba University Aspirations
 - 01-4** Chiba University Facts at a Glance

01 Introduction

A Message from the President



Chiba University was established as a new national university in 1949, bringing under its umbrella the Chiba Normal School and Chiba Medical College, its predecessor institutions with a history of roughly 150 years. Today our university boasts 10 faculties and 17 graduate schools on four campuses in Chiba Prefecture and one in metropolitan Tokyo, and a rich academic environment where students can acquire a broad-based interdisciplinary education and an advanced level of expertise. Education at Chiba University is guided by our philosophy to “Always Aim Higher,” and through innovative programs such as ENGINE, we actively promote the development of emerging leaders with superior intelligence and humanity, who will one day be able to play vital roles in a global society through their acquisition of excellent academics worthy of the highest institution of learning.

In the area of research, we are vigorously promoting world-leading research and researchers as well as the collaboration of industry, academia and government through the Academic Research & Innovation Management Organization (IMO) and various initiatives. To realize Society 5.0, while respecting diversity in learning, we will promote world-class academic research that will lead to the development of new fields of research based on highly original ideas, and innovative development research that will bring about changes in society.

With this university as our springboard, we will continue to make a wide range of social contributions in education, administration, industry, healthcare and the local community. In this way, we aim to enhance Chiba University’s regional status and become a university that everyone in the region can take pride in. As we expand our presence

through education, research, and social contributions, the original missions of the university, we aim to establish our position as “a world preeminent academic institution”.

I hope that this brochure will be useful in acquainting you with Chiba University’s current activities and our future plans and aspirations.

NAKAYAMA Toshinori

President of Chiba University

Chiba University Charter



“Always Aim Higher”

This charter is guided by the university motto
“Always Aim Higher.”

Chiba University undertakes teaching and research to maintain, disseminate and advance knowledge. In its teaching Chiba University will seek to meet the interests of students, the needs of the community, and to foster generally the exploration and discovery of ideas and knowledge.

Based on the principle, the university community shall firmly maintain the spirit of freedom and independence. We will actively seek ways of organizing and managing ourselves that best support our teaching and research. We will be open and alert to new opportunities, including collaboration and cooperation with other institutions, to further the role we play. We will participate actively in our local community and play our part as critic and conscience of society and will further the cause for peace and harmonious coexistence with nature.



1 Ensure that students are supported in their studies, in a manner which maximizes their opportunity to reach their potential, through the provision of appropriate services and support mechanisms, including student mental and physical health, and welfare.

2 Provide an academically rigorous education that meets international standards to ensure that our qualifications, our staff, and our students continue to receive recognition from comparable institutions nationally and internationally.

3 Ensure that the University is an active and respected member of the international academic community, that opportunities for overseas students to study and to undertake research are increased, and that our students are exposed to the benefits of an international perspective in their studies and lives.

4 Maintain and develop research and creative activities of international standing regarding both quality and productivity by promoting selected areas in which excellence can be achieved while also protecting the rights and obligations of all academic staff to undertake research. Within this environment, the university will be flexibly managed to resonate with and adapt to the changing times.

Towards a world preeminent academic institution

World Leading Research

A Hub of Global Brain Circulation

–Generate and expand world leading research–

- Appreciate academic diversity to encourage creative research
- Promote world-class academic research to pioneer new interdisciplinary research fields
- Accelerate innovative research to create new academic value
- Establish a research-faculty organization, “International Strategic Research Institute”

Global Education

Nurture Global Talent

–Learn from the world, devote to the world–

- Let the world be our campus –Provide an educational environment in which to learn cutting-edge technologies and knowledge–
- Be a leader within global society –Cultivate leadership qualities and challenging attitude–
- Develop advanced expertise –Foster comprehensive knowledge and profound intelligence–
- Build the highest level of advanced education –Strengthen the International Strategic Research Institute–

Holistic Governance

Strategic and Holistic University Management

–Strengthen operation foundations–

- Implement digital transformation –Govern the strategic university management
- Inspire employees to give their best performance –Enhance the competitiveness of the University in a collaborative system
- Create a fulfilling and rewarding academic environment –Build the workplace where all can gain enrichment in everyday work
- Formulate elaborate and systematic PR strategies –Utilize social resources effectively–

Social Engagement

Chiba University’s commitment to society

- Contribute to sustainable development of society by producing high quality research and cultivating specialized talents
- Engage the community as a base for intelligence and human resources
- Strengthen the Industry-Academia-Government relationships towards innovation
- Establish the Chiba University brand as a world-leading university

Chiba University

Facts at a Glance

17

Graduate Schools

- Humanities and Studies on Public Affairs
- Law School
- Education
- Science and Engineering
- Horticulture
- Medical and Pharmaceutical Sciences
- Nursing
- Graduate Degree Program of Global and Transdisciplinary Studies
- Global & Transdisciplinary Studies
- Humanities
- Social Studies
- Science
- Engineering
- Horticulture
- Medicine
- Pharmaceutical Sciences
- Nursing

10

Undergraduate Schools

- Liberal Arts and Sciences
- Letters
- Law, Politics and Economics
- Education
- Science
- Engineering
- Horticulture
- Medicine
- Pharmaceutical Sciences
- Nursing

22

Centers for Education and Research

4

Attached Schools

Kindergarten / Elementary School /
Junior High School / School for Children with Special Needs

About

1.3

Million Books

University Library / Academic Link Center

About

850

Beds in University Hospital

18,046 New Inpatients (2020)

0.96

Million m²

Nishi-Chiba Campus / Inohana Campus / Matsudo Campus
Kashiwanoha Campus / Sumida Satellite Campus

78.1

Billion Yen

Budget (2021)

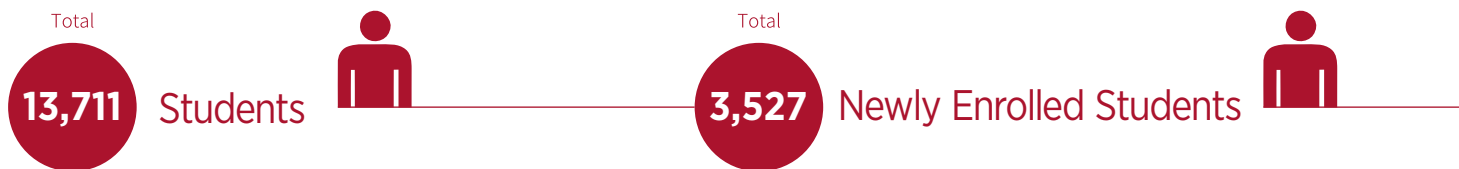
482

Agreements with Partner Universities and Institutions

(As of May 1, 2021)

261 University Level Exchange Agreements
221 Faculty Level Exchange Agreements





10,381 (Undergraduate Degree)
2,047 (Master's Degree)
1,181 (Doctoral Degree)
102 (Professional Degree)

2,354 (Undergraduate Degree)
904 (Master's Degree)
232 (Doctoral Degree)
37 (Professional Degree)

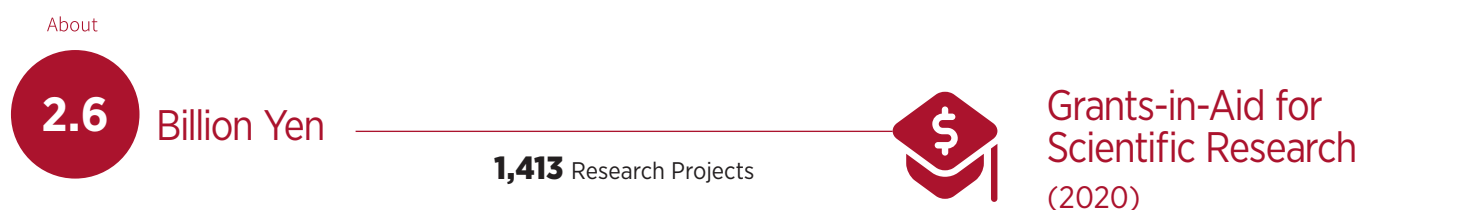


1,705 Staff
1,794 Staff
 ● Male ● Female

10 Executive Directors
 (● 8 Male ● 2 Female)

1,321 Academic Staff
 (● 1,018 Male ● 303 Female)

2,168 Technical/Administrative Staff
 (● 679 Male ● 1,489 Female)



- 
- The background of the page is a photograph of the Chiba University campus during sunset. The sky is a mix of soft pinks, oranges, and blues. In the foreground, there are dark silhouettes of trees. In the middle ground, several university buildings are visible, including a prominent white building with many windows. The overall atmosphere is calm and scenic.
- 02-1** Enhanced Network for Global Innovative Education—ENGINE—
 - 02-2** Top Global University Project
 - 02-3** Inter-University Exchange Project
 - 02-4** Frontier Science Program Early Enrollment
 - 02-5** Institute for Global Prominent Research
 - 02-6** Inohana Campus High Functionality Initiatives and Inohana IPE
 - 02-7** Academic Research & Innovation Management Organization (IMO)
 - 02-8** SDGs and ISO 14001 (Environmental Management System)

02 Topic

Enhanced Network for Global Innovative Education —ENGINE—

<https://www.chiba-u.ac.jp/engine/index.html>

■ Chiba University Global Program “ENGINE”



Chiba University has created the Chiba University Global Program “ENGINE”, which stands for “Enhanced Network for Global Innovative Education”.

ENGINE, which started in the 2020 academic year, will equip professionals aiming to achieve flourishing careers on a world stage with the ability to communicate, convey information, and articulate their ideas in English.

1 Provide a properly resourced environment for our students to study overseas

With the principal goal of instilling our students with an international sensibility, a period of overseas study is

mandatory for both undergraduate and graduate school students. We offer a diverse range of overseas study programs in all our faculties and departments that fit students’ overseas study goals and foreign language skills.

2 Provide a fully globalized education

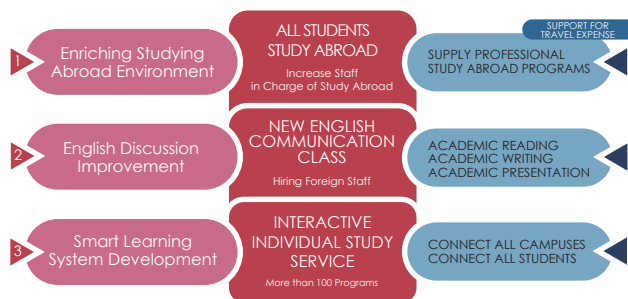
Chiba University provides an environment where students can study English from a multidisciplinary perspective. For English reading and writing skills, we provide courses that help students with

writing their theses in English. For English listening and speaking skills, we conduct practical-oriented education for communicating in English within the context of international Japanese studies.

3 Practice-based application of “smart learning” system

We put in place an environment where students can study anytime and anywhere through the use of “smart learning”, an e-learning teaching system.

Chiba University Global Program “ENGINE”



02-2

Top Global University Project

<https://www.chiba-u.ac.jp/e/exchange/initiatives/university-project.html>

■ Chiba University: Inspiring Leaders with a Global Perspective



In fiscal 2014, Chiba University was selected for the Top Global University

Project of the Ministry of Education, Culture, Sports, Science and Technology (MEXT) as a Type B (Leading Global) university. Through this project, MEXT provides support to outstanding universities engaged in educational research at an international level that are promoting internationalization through sweeping university reforms with a view to improving Japan’s competitiveness in higher education and global universities playing a leading role in the internationalization of universities in Japan.

1 Three abilities for a global leader

Considering that the global leaders of the future should be educated with a

global perspective, we are designing educational programs to cultivate intellectual abilities to form an overview, discovering new perspectives, and finding practical solutions, which are fundamental to the development of such leaders.

2 Four reforms for the transformation of Chiba University

- Transformation through governance reform
- Transformation through learning system reform
- Transformation through program reform
- Transformation through global network reform

3 Chiba University’s own indicators and targets 753+1

(Shichi Go San plus Ichi) plan

- 700 subjects in English
- 50% of intake quota goes on overseas study (1,200 students)
- 3,000 overseas students accepted
- 10% of intake quota admitted by diversified entrance exams (240 students)

■ Programs for Developing Global Leaders -skipwise-



“skipwise” is Chiba University’s program for providing support to

students to enable them to play active roles in various fields as global leaders.

Skippping: Provides global programs of various lengths, making use of early entry and early graduation option.

Knowledge stock: Provides “International Japanology” which aim to provide students with the basic knowledge required for studying abroad.

International support: Provides opportunities for communicating in English at English House; provides information and support for study abroad.

Professional experience: Provides opportunities to participate in international internship and volunteer programs.

Inter-University Exchange Project

www.chiba-u.ac.jp/e/exchange/initiatives/exchange-project.html

This is an initiative of MEXT and supporting international collaborative projects between universities in Japan and those in Asia, the USA, and Europe while assuring the quality of education. The project objective is to foster human resources who work in a global society and strengthen education at universities overseas.



Japan-U.S. Unique Program by COIL (COIL JUSU)

This program provides active learning style lectures with four U.S. universities through COIL* on unique education and research fields. Students in each country share knowledge with one another on their areas of expertise. *COIL: Collaborative Online International Learning.
Support period: FY2018~FY2022



Future Agriculture with Far East Russia Pre-Master to PhD Program (FARM)

This program trains leaders and professionals for future agriculture in Far East Russia. Participants learn from diverse fields such as agricultural engineering, food marketing, crop cultivation, and environmental control.
Support period: FY2017~FY2021

Global programs launched by Inter-University Exchange Project

These projects were first initiated by

MEXT but continued even after financial support ended.



Campus Asia Plant Environment Innovation Program (CAPE)

CAPE will work with three universities in China and South Korea to develop human resources possessing skills in both horticulture and engineering and the ability to plan, propose, and implement plant-environment innovation.



Post Urban Living Innovation Education and Research Program (PULI)

PULI programs will implement the next generation, practically oriented human resources development program (Post Program) jointly in Japan and Central America. There are eight different PULI programs related to design, architecture, urban environment and horticulture.



Twin College Envoys Program (TWINCLE)

This program consists of three major activities in ASEAN countries. The first is a teaching internship at a high school. The second is science educational experiences and, the third is a class of Japanese culture. Over 1,000 students joined the program through 10 years, and the program was selected as a good practice of SDGs education by MEXT.



Continents Design Education Program (CODE)

Under CODE, students study design in the U.S. and Europe for one year within a new approach: a six-year study period comprised of 3.5 years of undergraduate and 2.5 years of graduate study. The program develops globally-oriented designers who will create future industries based on a design education that reflects the special characteristics of each country.

Frontier Science Program Early Enrollment

<https://www.cfs.chiba-u.jp/en/index.html>

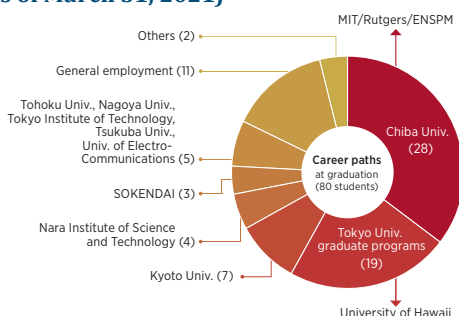
The Frontier Science Program, in which gifted students get professional education in science as regular students before graduating from high schools, is designed to foster highly creative young scientists and researchers venturing out into the world. We call for applicants in winter and spring. Successful candidates start their study in the 6 fields and 14 classes

at Chiba University either from April or September. The curriculum is enriched by one month of English training in Canada. The small-group instruction, seminars, and majority of alumni continued their studies at graduate schools at Chiba University or other universities. Some of them are teaching at universities or working as scientists and engineers in research institutes.

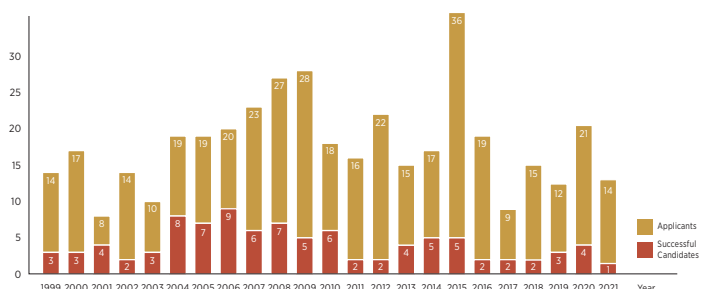
The 6 fields & 14 classes

- Physics ● Chemistry ● Biology
- Engineering
 - Architecture, Urban Eng., Design, Mechanical Eng., Medical Eng., Electrical and Electronics Eng., Materials Science, Applied Chemistry and Biotechnology, Information Eng.
- Plant Biology
- Human Sciences

Affiliation of Alumni after Graduation (As of March 31, 2021)



Statistics of Applications and Successful Candidates by year (As of March 31, 2021)



Institute for Global Prominent Research

<https://igpr.chiba-u.jp/global>

■ Research Strategy of Chiba University –Establishment of the Institute for Global Prominent Research–

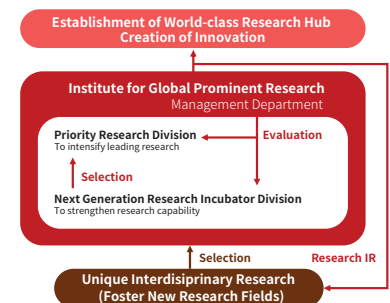
The Institute for Global Prominent Research (IGPR) was established in April 2016 to execute the university's strategic initiatives, including "World-level Research Promotion" and "Creation of Next Generation Innovation." Specifically, IGPR uncovers and nurtures research groups with novelty and originality to develop innovative human resources and build the basis for the new and interdisciplinary academic fields. IGPR also puts effort into institutional research (IR) to promote leading research projects.

■ Overview of the Institute for Global Prominent Research

IGPR consists of two research divisions: 1) Priority Research Division with three research groups and 2) Next Generation Research Incubator Division with 19 groups. The goal of the Priority Research Division is to establish international research hubs. Three groups are building networks with leading-edge research institutes and promoting international joint research to achieve this goal. The Incubator Division is to strengthen the overall research capacity of each group. IGPR provides financial and administrative support based on the requests of each group and the evaluation of its' achievements. It also offers capacity development programs for young researchers. By discovering promising research groups from early and mid-career researchers, IGPR also plays a role in

enhancing the strengths and distinctive features of the university and ensuring academic diversity.

Six years after its establishment, IGPR will continue contributing to reinforcement of research activities of Chiba University.



For further information, please visit our website: <https://igpr.chiba-u.jp/global/>

Inohana Campus High Functionality Initiatives and Inohana IPE

<https://mirai-kikou.chiba-u.jp/english/index.html>

<https://www.n.chiba-u.jp/iperc/home-english/inohana-ipe/aboutinohanaipe/index.html>

■ Inohana Campus High Functionality Initiatives to foster next generation medical personnel and to create the "Therapeutics" Center

As the only national university with the three medical-related departments of Medicine, Pharmaceutical Sciences, and Nursing, Chiba University bears the responsibility to meet the social expectations and needs by nurturing future global leaders in the fields. Chiba University, therefore, strengthens the promotion of "Therapeutics" as its highest priority.

Therapeutics is the new academic field that systematically studies preventive, diagnostic, and curative theories and practices to develop novel treatments. To achieve this goal, we accelerate the high functionality of the Inohana Campus

with the support of the Future Medicine Education and Research Organization of Chiba University.

■ Inohana IPE is an innovative undergraduate program in Japan

Inohana Interprofessional Education (IPE) is an educational program conducted through the cooperation and collaboration of the School of Nursing, School of Medicine, and Faculty of Pharmaceutical Sciences since 2007. It is fostering the development of independent and organizational medical professionals who can provide patient-centered treatment and care in cooperation and collaboration with other professionals.

Among the notable features of IPE are the study of four multi-level four-year sub-

jects that are set as compulsory subjects, as well as the adoption of active learning and small group study.

With the cooperation of university hospitals and various health and welfare institutions, students will have the opportunity to learn about actual professional collaboration.



First-year students : group work

Academic Research & Innovation Management Organization (IMO)

<https://imo.chiba-u.jp/>

■ Chiba University's new Innovation Hub for Industry-Academia-Government Collaboration



The Academic Research & Innovation Management Organization (IMO) was established in April 2020, funded by the Cabinet Office's innovation enhancement program. In April 2021, IMO launched a new IMO building, which serves as an open innovation hub to support startups and multi-organizational collaborations and promote research exchange and business attraction.

■ IMO's Innovation Ecosystem

IMO will further develop its functions and roles as a hub for research promotion and industry-academia-government collaboration. The organization integrates all the necessary functions for innovation: promotion of academic research and im-

plementation of research achievements in society. By assigning University Research Administrators (URAs) to strengthen coordinating activities with companies and other stakeholders, we will take various efforts to promote joint research with other institutes and private companies. At the same time, we will provide researchers with comprehensive support ranged from the planning of research strategy to patent application and productization. IMO has been participating in several industry-academia-government collaboration events and matching meetings between university researchers and local financial institutions to introduce research activities of our university. We also hosted the "Patent Grand Prix 2020" for students and young faculty to acquire basic knowledge and skills related to the patent search. In May 2021, Chiba University has signed a comprehensive cooperation agreement with Japan External Trade Organization

(JETRO). Based on the agreement, we set up the "Industry-Academia Collaboration JETRO Desk" on the second floor of the IMO building.

■ Utilizing Open Space for Innovation

IMO offers the Open Innovation Space for all stakeholders: faculty members, researchers and students of Chiba University and nearby educational institutions, researchers from local private companies, venture companies, entrepreneurs, local government officers, and others. We uphold networking and cooperation with those stakeholders to accelerate the creation of innovation through joint research.



IMO's open innovation space

SDGs and ISO 14001 (Environmental Management System)



<https://www.chiba-u.ac.jp/e/about/environment/>

■ Student-led environmental initiatives that are valued around the world

Certification in international standards for Environmental Management Systems (EMS)

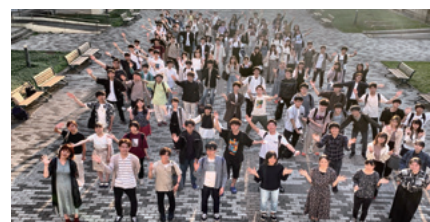
In 2005, Chiba University acquired ISO14001. The Student Committee for EMS was established in 2003 in the official organization of the University. And under the environmental policy, the students have been at the helm of these ISO initiatives.

Operation of EMS led by the Student Committee.

On the EMS PDCA cycle, the Student Committee plays core roles. Including; making

drafts of environmental objectives and plans, lecturing about EMS at basic training, serving as internal auditors, and editing sustainability reports. In addition, they carry out various activities such as a used book market, making posters for raising awareness of the environment, a green curtain, and compost, holding eco classes for young children, making community gardens and so on. In recent years, it has also implemented SDGs projects in cooperation with companies and the range of activities has expanded greatly. Chiba University was awarded "Student Leadership Division" of "Sustainable Campus Excellence Awards" by ISCN in 2017 and "Student Engagement" category of "International Green Gown

Awards" by the EAUC in 2018 and 2019. It was evaluated worldwide!



More than 200 students belong to the committee every year.



International Green Gown Awards 2018



03

Undergraduate & Graduate

03-1 Undergraduate School

College of Liberal Arts and Sciences

Faculty of Letters

Faculty of Law, Politics and Economics

Faculty of Education

Faculty of Science

Faculty of Engineering

Faculty of Horticulture

School of Medicine

Faculty of Pharmaceutical Sciences

School of Nursing

03-2 Graduate School

Graduate School of Humanities and Studies of Public Affairs

Law School

Graduate School of Education

Graduate School of Science and Engineering

Graduate School of Horticulture

Graduate School of Medical and Pharmaceutical Sciences

Graduate School of Nursing

Global Degree Program of Global and Transdisciplinary Studies

Undergraduate School

College of Liberal Arts and Sciences

https://www.chiba-u.ac.jp/e/education/undergraduate/college_of_liberal_arts_and_sciences.html
E-mail: las-soumu@chiba-u.jp



Faculty of Letters

https://www.chiba-u.ac.jp/e/education/undergraduate/faculty_of_letters.html
E-mail: gae2343@chiba-u.jp



Faculty of Law, Politics and Economics

https://www.chiba-u.ac.jp/e/education/undergraduate/faculty_of_law_politics_and_economics.html
E-mail: gae2343@chiba-u.jp



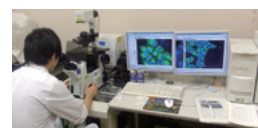
Faculty of Education

https://www.chiba-u.ac.jp/e/education/undergraduate/faculty_of_education.html
E-mail: hag2505@office.chiba-u.jp



Faculty of Science

https://www.chiba-u.ac.jp/e/education/undergraduate/faculty_of_science.html
E-mail: iac2871@office.chiba-u.jp



Faculty of Engineering

https://www.chiba-u.ac.jp/e/education/undergraduate/faculty_of_engineering.html
E-mail: mah3034@office.chiba-u.jp



Faculty of Horticulture

https://www.chiba-u.ac.jp/e/education/undergraduate/faculty_of_horticulture.html
E-mail: zaf8703@office.chiba-u.jp



School of Medicine

https://www.chiba-u.ac.jp/e/education/undergraduate/school_of_medicine.html
E-mail: inohana-koho@chiba-u.jp



Faculty of Pharmaceutical Sciences

https://www.chiba-u.ac.jp/e/education/undergraduate/faculty_of_pharmaceutical_sciences.html
E-mail: inohana-koho@chiba-u.jp



School of Nursing

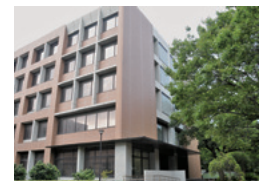
https://www.chiba-u.ac.jp/e/education/undergraduate/school_of_nursing.html
E-mail: inohana-koho@chiba-u.jp



Graduate School

Graduate School of Humanities and Studies on Public Affairs

https://www.chiba-u.ac.jp/e/education/graduate/graduate_school_of_humanities_and_studies_on_public_affairs.html
E-mail: gah2352@office.chiba-u.jp



Law School

https://www.chiba-u.ac.jp/e/education/graduate/law_school.html
E-mail: gai2349@office.chiba-u.jp



Graduate School of Education

https://www.chiba-u.ac.jp/e/education/graduate/graduate_school_of_education_1.html
E-mail: hag2505@office.chiba-u.jp



Graduate School of Science and Engineering

https://www.chiba-u.ac.jp/e/education/graduate/graduate_school_of_science_and_engineering.html
E-mail: iad2880@office.chiba-u.jp (Science)
kougaku-daigakuin@office.chiba-u.jp (Engineering)



Graduate School of Horticulture

https://www.chiba-u.ac.jp/e/education/graduate/graduate_school_of_horticulture_1.html
E-mail: zaf8703@office.chiba-u.jp



Graduate School of Medical and Pharmaceutical Sciences

https://www.chiba-u.ac.jp/e/education/graduate/graduate_school_of_medical_and_pharmaceutical_sciences.html
E-mail: inohana-koho@chiba-u.jp



Graduate School of Nursing

https://www.chiba-u.ac.jp/e/education/graduate/graduate_school_of_nursing_1.html
E-mail: inohana-koho@chiba-u.jp



Graduate Degree Program of Global and Transdisciplinary Studies

https://www.chiba-u.ac.jp/e/education/graduate/graduate_degree_program_of_global_and_transdisciplinary_studies.html
E-mail: soukoku-gdp@chiba-u.jp



04 Center

04-1 University Library / Academic Link Center

04-2 Center for Education and Research

04-3 University Hospital

University Library / Academic Link Center

<https://www.ll.chiba-u.jp/> • https://www.chiba-u.ac.jp/e/education/center/academic-link_center.html
E-mail: fbc2258@office.chiba-u.jp (University Library) • alc-info@chiba-u.jp (Academic Link Center)

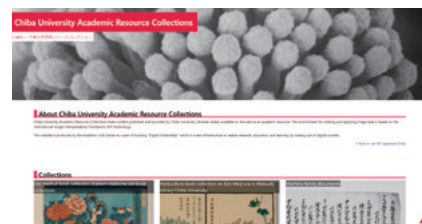
“Academic Link” is a concept for teaching and learning that aims to nurture “thinking students” with abilities to select, process, and utilize knowledge for their long-life learning, and to foster “knowledge professionals” with deep expertise and comprehensive thinking.

The University Library / Academic Link Center provides not only a quiet study environment for students but also various venues where they can engage in discussions, give presentations, obtain printed and electronic educational materials and content, and receive human support in their studies. We are strengthening and expanding the teaching and learning support activities at Chiba University to build an educational infrastructure that consistently supports undergraduate and graduate

programs. Our activities include information resources provision both in print and digital formats, research support for graduate students such as seminars and individual consultations on English papers, etc. Reconstruction of the Horticultural Science Library enabled us to commence the new learning support activities under the Academic Link concepts in Matsudo Campus from 2019. The Academic Link Center was selected as Joint Usage / Education Center in July 2015 by the Ministry of Education, Sports, Culture, Science and Technology (MEXT). The Academic Link Center proceed with the Academic Link Professional Staff development program for educational and learning support (ALPS program). The Certificate program for Professional of Education and Learning Support under the ALPS program was certified as a Brush up Program for professional (BP) in April 2019 by MEXT.



Active Learning Spaces



Digital Scholarship (c-arc)



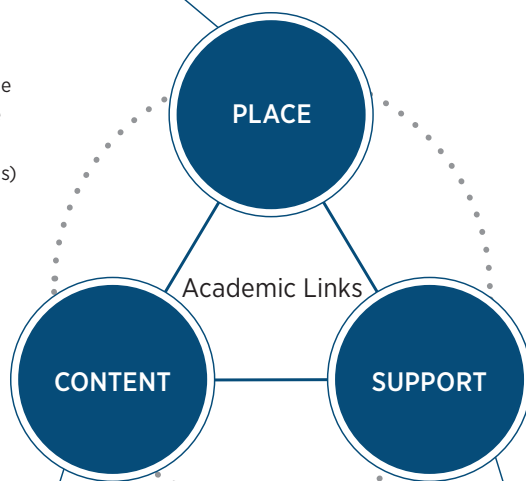
Research Commons

Active Learning Spaces

Provide appropriate places where students can study in groups or individually, or present results of their own study while taking advantage to the maximum of available human resources (teachers, librarians, and other students) who will provide various forms of support including materials, content, information and communications technology as well as study support.

Digital Scholarship

With an emphasis on the usage of digital content in research, education, and learning, and further digitization of scholarly communications, the Center provides digitized academic resources owned by Chiba University through the “Chiba University Academic Resource Collection: c-arc” and the “Chiba University Bookshelf: cu-Books”. They are platforms to utilize digital resources, and to disseminate CU’s research results.



Purpose

To create thinking students
and foster knowledge
professionals

3

functions for creating thinking students

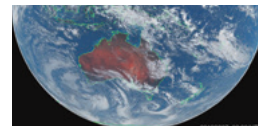
Research Commons

To broaden students’ interests and to meet their individual needs in learning, and to improve their academic skills, the Center has provided a variety of programs including report writing seminars, lunchtime short seminars, person-to-person learning/research support such as Academic English Consultation.

Center for Education and Research

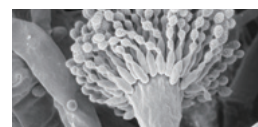
Center for Environmental Remote Sensing (CEReS)

https://www.chiba-u.ac.jp/e/education/center/center_for_environmental_remote_sensing_ceres.html
E-mail: rimosen@office.chiba-u.jp



Medical Mycology Research Center (MMRC)

https://www.chiba-u.ac.jp/e/education/center/medical_mycology_research_center_mmrc.html
E-mail: inohana-koho@chiba-u.jp



Center for Analytical Instrumentation

https://www.chiba-u.ac.jp/e/education/center/center_for_analytical_instrumentation.html
E-mail: cai-network@chiba-u.jp



Institute of Management and Information Technologies (IMIT)

https://www.chiba-u.ac.jp/e/education/center/institute_of_management_and_information_technologies_imit.html
E-mail: info_imit@ML.chiba-u.jp



Center for Frontier Science

https://www.chiba-u.ac.jp/e/education/center/center_for_frontier_science.html
E-mail: cfs-info@chiba-u.jp



Center for Relational Studies on Global Crises

https://www.chiba-u.ac.jp/e/education/center/center_for_relational_studies_on_global_crises_1.html



Marine Biosystems Research Center

https://www.chiba-u.ac.jp/e/education/center/marine_biosystems_research_center.html
E-mail: bee3832@office.chiba-u.jp



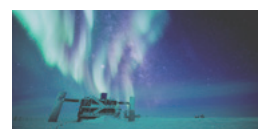
Soft Molecular Activation Research Center (SMARC)

https://www.chiba-u.ac.jp/e/education/center/soft_molecular_activation_research_center_smarc.html
E-mail: ciric-network@chiba-u.jp



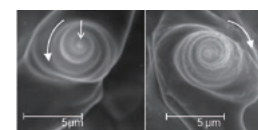
International Center for Hadron Astrophysics (ICEHAP)

https://www.chiba-u.ac.jp/e/education/center/international_center_for_hadron_astrophysics_icehap.html
E-mail: icehap@ML.chiba-u.jp



Molecular Chirality Research Center (MCRC)

https://www.chiba-u.ac.jp/e/education/center/molecular_chirality_research_center_mcrc.html
E-mail: mah3034@office.chiba-u.jp



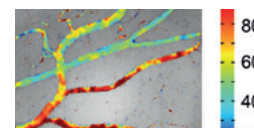
Design Research Institute (dri)

https://www.chiba-u.ac.jp/e/education/center/design_research_institute.html
E-mail: sumida-jimu@chiba-u.jp



Center for Frontier Medical Engineering

https://www.chiba-u.ac.jp/e/education/center/center_for_frontier_medical_engineering.html
E-mail: mae3114office.chiba-u.jp



Center for Environment, Health and Field Sciences

https://www.chiba-u.ac.jp/e/education/center/center_for_environment_health_and_field_sciences.html
E-mail: zao8006@office.chiba-u.jp



Biomedical Research Center

https://www.chiba-u.ac.jp/e/education/center/biomedical_research_center.html
E-mail: inohana-koho@chiba-u.jp



Center for Forensic Mental Health

https://www.chiba-u.ac.jp/e/education/center/center_for_forensic_mental_health.html
E-mail: inohana-koho@chiba-u.jp



Center for Preventive Medical Sciences

https://www.chiba-u.ac.jp/e/education/center/center_for_preventive_medical_sciences.html
E-mail: inohana-koho@chiba-u.jp



Future Medicine Research Center (FMRC)

https://www.chiba-u.ac.jp/e/education/center/future_medicine_research_center_fmrc.html
E-mail: inohana-koho@chiba-u.jp

Research Center for Regenerative Therapeutics

https://www.chiba-u.ac.jp/e/education/center/research_center_for_regenerative_therapeutics.html
E-mail: inohana-koho@chiba-u.jp



Research Center for Child Mental Development

https://www.chiba-u.ac.jp/e/education/center/research_center_for_child_mental_development.html
E-mail: inohana-koho@chiba-u.jp



Plant Molecular Science Center

https://www.chiba-u.ac.jp/e/education/center/plant_molecular_science_center.html
E-mail: inohana-koho@chiba-u.jp

Radioisotope Research Center

https://www.chiba-u.ac.jp/e/education/center/radioisotope_research_center.html
E-mail: isotope@office.chiba-u.jp



University Hospital

<https://www.ho.chiba-u.ac.jp/en/index.html>

E-mail xaf6005@office.chiba-u.jp

We have three main missions as a university hospital.

Clinical Medicine

to cure our patients



Our doctors, nurses and other staff are integral to the care we provide in a wide range of fields. Chiba University Hospital has state-of-the-art equipment that allows us to treat various challenging diseases. Our facilities ensure patients stay comfortable while they receive care. This combination of superb medical personnel, equipment and facilities is a hallmark of our hospital.

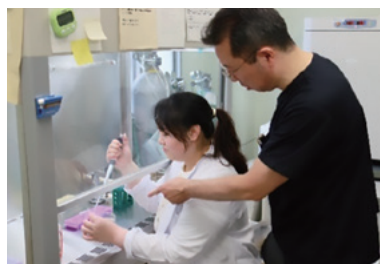
Education

to cultivate professionals leading to the future



Research

to find treatments for hard-to cure diseases



The Center for Treatment and Care that opened in January 2021 exemplifies our commitment to providing top-class medical care. With six floors aboveground and three below, this new building will have hybrid operating rooms and the latest radiation therapy units. The new building will bolster the services we provide so Chiba University Hospital can help more patients who need individualized care.



05

Internationalization

05-1 Overseas Centers / Partner Universities and Institutions

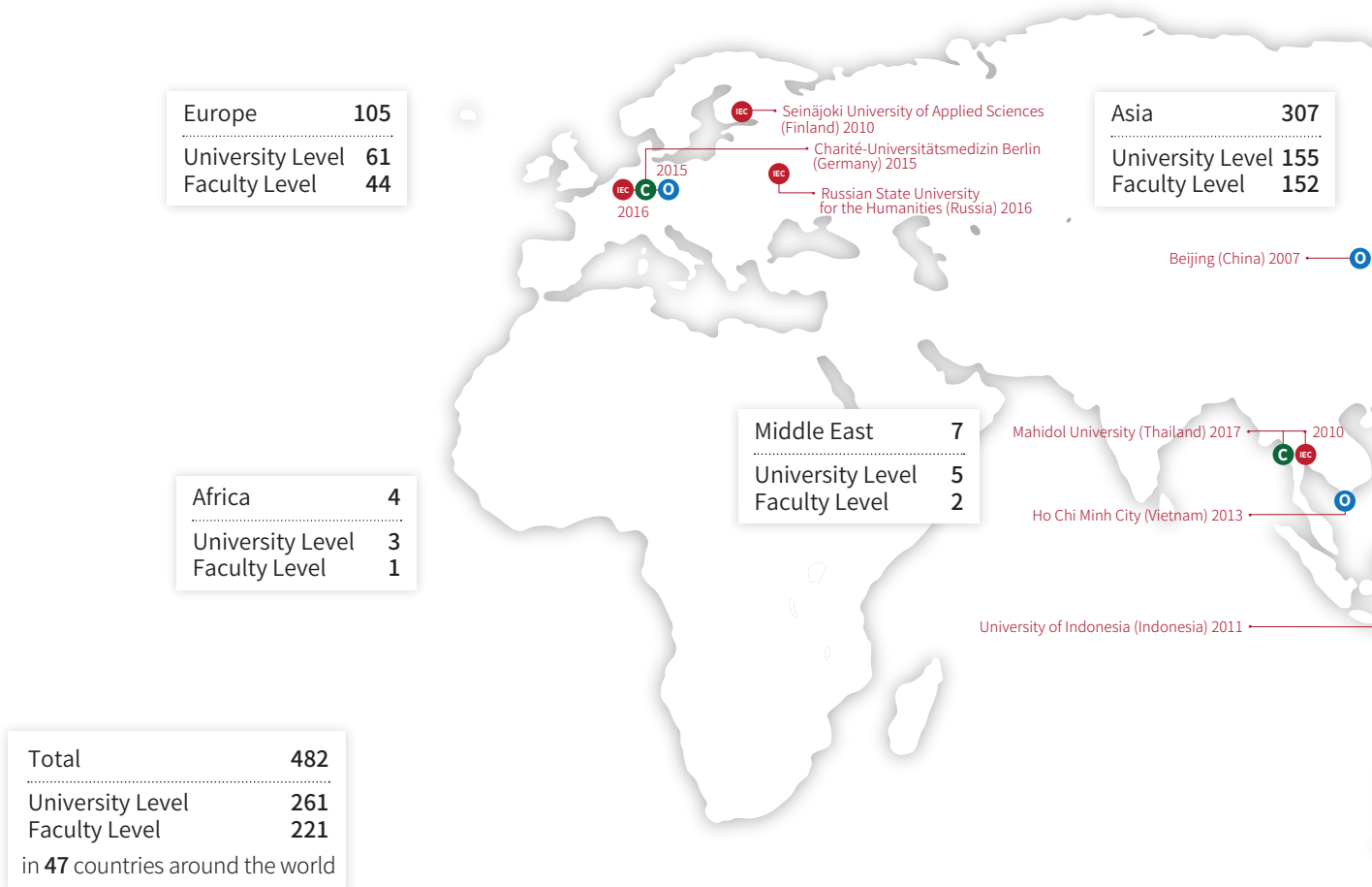
05-2 International Support Desk (ISD)

05-3 English House



Overseas Centers / Partner Universities and Institutions

<https://www.chiba-u.ac.jp/e/exchange/centers/index.html> • <https://www.chiba-u.ac.jp/e/exchange/sister/index.html>



University Level / Faculty Level Agreements

- C Campus
- ICRC International Cooperative Research Center
- IEC International Exchange Center
- O Office

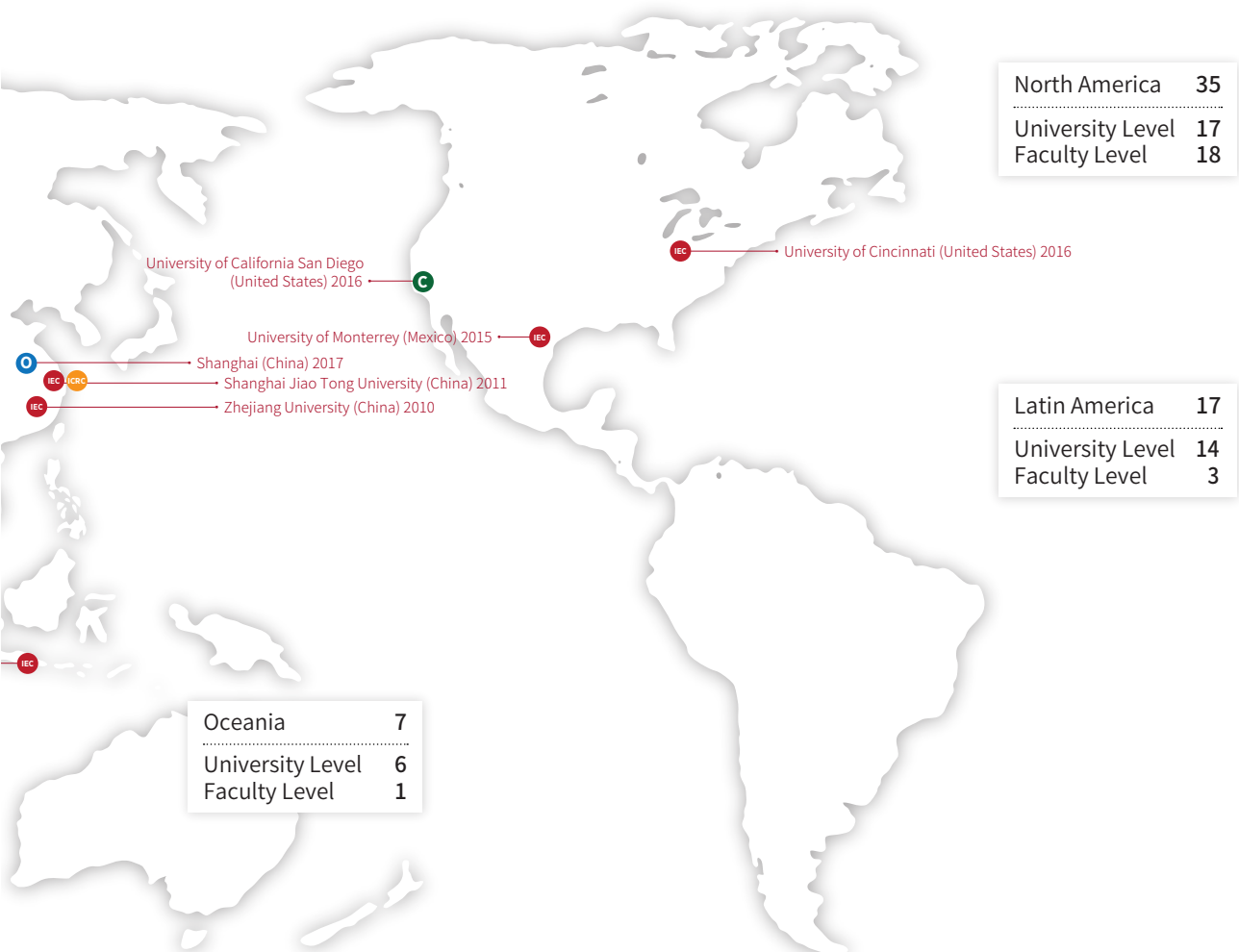
Chiba University is developing overseas centers to enhance global research and education, categorized into: (i) Overseas Campuses, (ii) ICRC (the International Cooperative Research Center), (iii) IECs (International Exchange Centers), and (iv) Overseas Offices. At present, there are a total of 17 centers, comprised of 3 Overseas Campuses, 1 ICRC, 9 IECs, and 4 Overseas Offices.



Charité-Universitätsmedizin Berlin

Charité - Universitätsmedizin Berlin

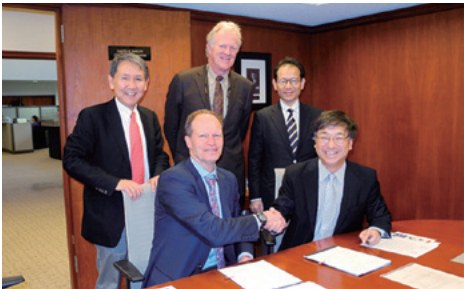
Chiba University Berlin Campus was established within Charité Universitätsmedizin Berlin (Germany) in May 2016. Charité Universitätsmedizin Berlin is one of the largest university hospitals in Europe. At this campus, we promote educational and research activities centered on medicine and pharmacology, including public health and global health.



IEC in Mahidol University

Mahidol University

Chiba University Bangkok center in Mahidol University International College (MUIC) (Thailand) was opened in September 2017. We utilize the Bangkok center as an overseas center of the development for global human resources through various joint programs with MUIC, while promoting international joint research in a wide variety of areas including environment, health and food with research institutions in ASEAN countries.



University of California: Signing ceremony

University of California San Diego

In April 2016, Chiba University established a new collaborative research center at the School of Medicine of the University of California, San Diego (UCSD) as its United States base of “International Center of Excellence in the Mucosal Immunology and Innovative Allergy Therapeutics at Chiba University” where we aim to promote innovative research in immunology. Utilizing the San Diego Research Center and Chiba Research Centers on Inohana campus, we plan to expand the international research network of Chiba University to countries in Asia, Europe, and Africa.

International Support Desk (ISD)

<https://www.chiba-u.ac.jp/international/isd/english/index.html>

Email : isd@office.chiba-u.jp

Nishi-Chiba campus (main office)

General Student Service Center 2F

Tel : +81-43-290-2195

Fax : +81-43-290-2198

Inohana campus branch

Medical and Pharmaceutical Science Building II 1F

Matsudo campus branch

F Building 1F

Functions as primary contact for international students and researchers who seek help in adapting to life in Japan and at Chiba University. ISD provides the latest information and specific advice on:

Immigration formalities

- Visa application/extension
- Changing residential status
- Bringing family members to Japan
- Residence card (Zairyu card)

Resident formalities

- National Health Insurance
- Moving-in/out notifications

Campus & daily life

- Opening a bank account
- Finding a clinic
- Nurseries / Schools
- Leisure venues
- Use of a bicycle on campus
- Food/ Restaurants

ISD also provides information about services handled by the Center for International Education (CIE) and International Student Division. These include:

- Japanese language courses
- Intercultural activities
- Exchanges with local communities
- Counseling for international students
- Language support by Japanese students/tutors
- Housing
- Scholarships



Center for International Education



International Support Desk (ISD)

English House

<https://www.chiba-u.ac.jp/englishhouse/>

Email : english-house@chiba-u.jp

English House is a welcoming place where you can study and practice languages in a relaxing atmosphere at your own pace.



At English House you can book customised Individual Lessons with a teacher and Conversation Sessions in which you can practise speaking English with Student Assistants (SAs) from various countries. There are workshops, such as our vocabulary workshop, preparation

for study abroad workshop, and various exam preparation workshops for even more opportunities to study and use English, and we are open for self-study or group-study. For our international students, there are also opportunities to practice Japanese with our Japanese SAs. On the social side, we have various cultural and social events at which you can experience overseas cultures and interact with both Japanese and international students. The Language Exchange Programme (LEX) is one of the most popular activities here, and every year, over 250 students participate in the programme to teach and learn each other's language. There are typically more than ten language combinations in each ten-

week programme. We also run seasonal events, various clubs and a buddy system for visiting international student groups. We work hard to maintain our friendly international language community so that Chiba University students of all language levels feel welcome and comfortable at English House.





06

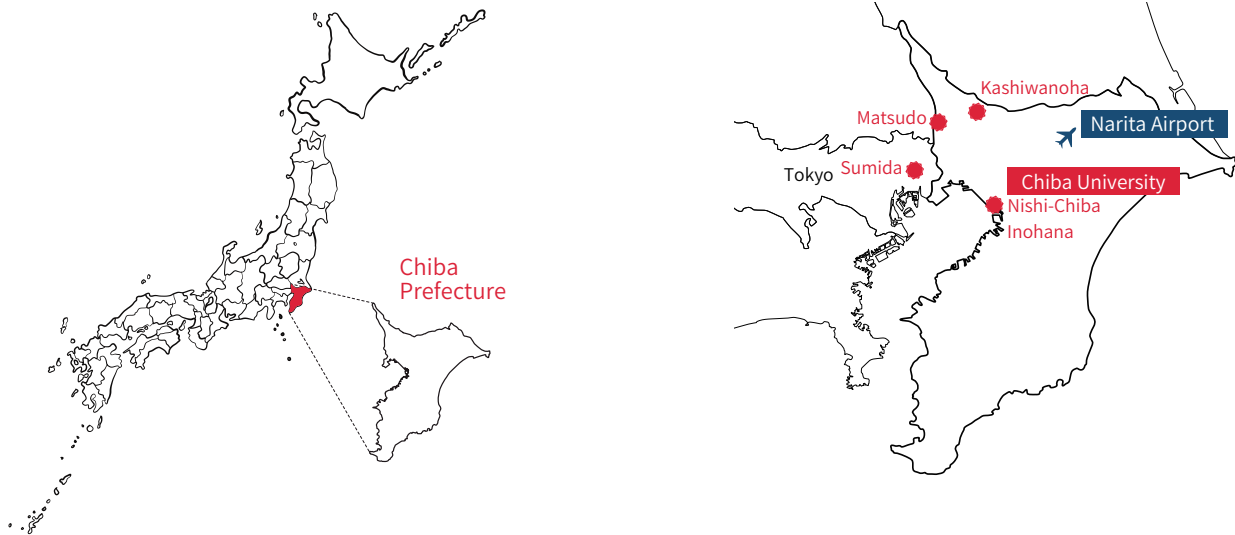
Access

- 06-1 Location & Transportation Map
- 06-2 Directions

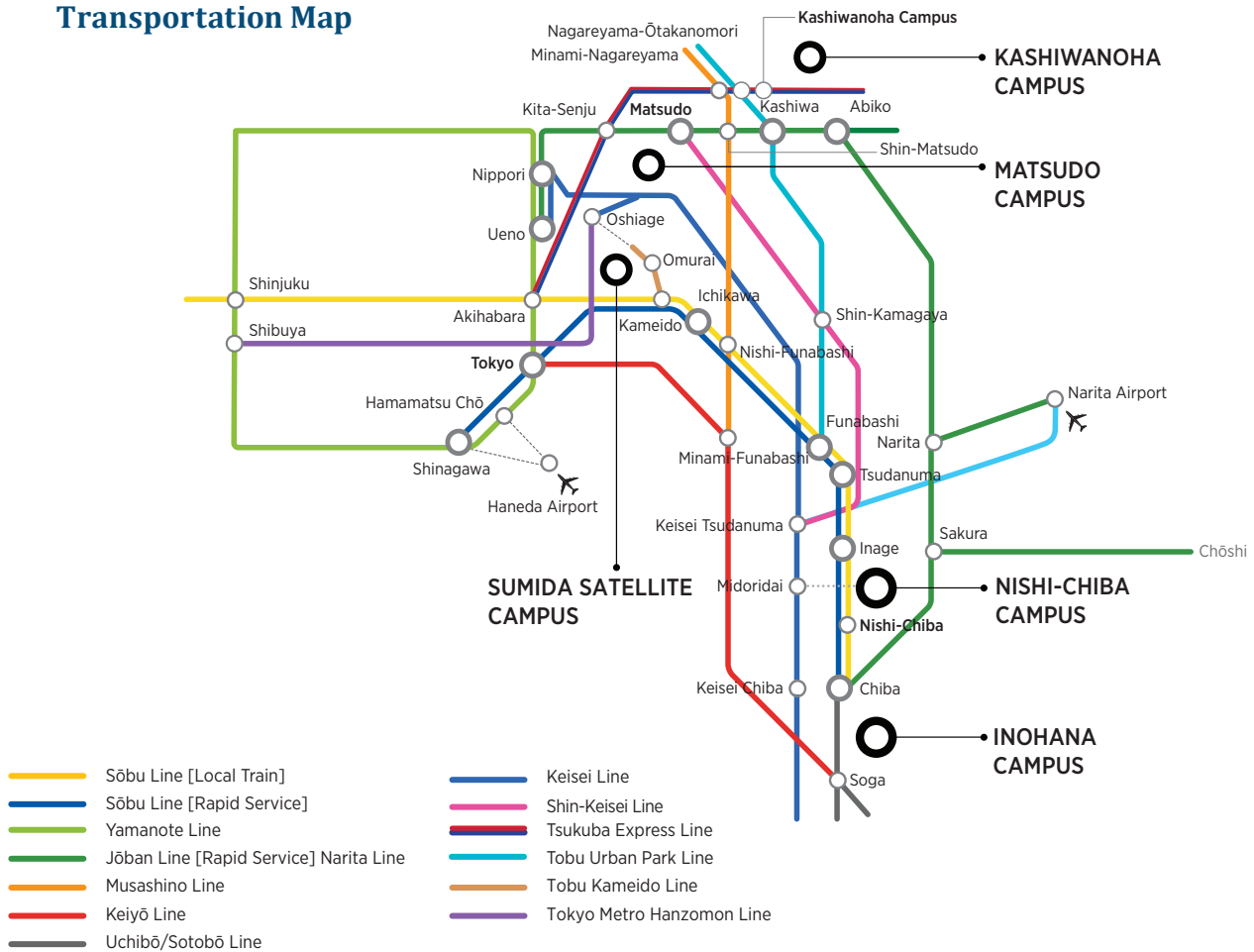
Location & Transportation Map

■ Where is Chiba University?

Map of Japan



Transportation Map



Directions

<https://www.chiba-u.ac.jp/e/about/location/index.html>

NISHI-CHIBA CAMPUS

A few minute walk from the North exit of JR Nishi Chiba Station (Sobu Local Line) or 7-minute walk from Midoridai Station (Keisei Line)



MATSUDO CAMPUS

15-minute walk from the East exit of Matsudo Station (JR Joban Line or Shin-Keisei Line)



INOHANA CAMPUS

Take Keisei Bus bound for Chibadaigaku Byoin (Chiba University Hospital) or Minami Yahagi from bus stop #7 at the East exit of JR Chiba Station/ Keisei Chiba Station (Keisei Line) and get off at the following bus stop:

Inohana Campus: Chibadaigaku Kangogakubu Iriguchi (Chiba University Faculty of Nursing Entrance), or Chibadaigaku Igakubu/Yakugakubu Iriguchi (Chiba University School of Medicine/ Faculty of Pharmaceutical Sciences Entrance).

University Hospital: Chibadaigaku Byoin (Chiba University Hospital).

KASHIWANOHA CAMPUS

5-minute walk from the West exit of Kashiwanoha-Campus Station (Tsukuba Express)



SUMIDA SATELLITE CAMPUS

5-minute walk from the Omurai Station (Tobu Kameido Line)



Campus Locations and General Contacts

International Affairs Division

(General Student Service Center)

Tel : +81-43-290-2043

Fax : +81-43-290-2041

E-mail : kokusai@office.chiba-u.jp

NISHI-CHIBA CAMPUS

1-33, Yayoi-cho, Inage-ku, Chiba-shi, Chiba,
263-8522 Japan

- College of Liberal Arts and Sciences
- Faculty of Letters
- Faculty of Law, Politics and Economics
- Faculty of Education
- Faculty of Science
- Faculty of Engineering
- Graduate School of Humanities and Studies on Public Affairs
- Law School
- Graduate School of Education
- Graduate School of Science and Engineering
- Graduate Degree Program of Global and Transdisciplinary Studies
- University Library -Central Library
- Center for Environmental Remote Sensing
- Center for Analytical Instrumentation
- Institute of Management and Information Technologies
- Center for Frontier Science
- International Center for Hadron Physics
- Academic Link Center
- Radioisotope Research Center

INOHANA CAMPUS

1-8-1, Inohana, Chuo-ku, Chiba-shi, Chiba, Japan

260-8670 (for Medicine, Biomedical)

260-8671 (for University Library)

260-8672 (for Nursing)

260-8673 (for MMRC)

260-8675 (for Pharmaceutical Sciences)

260-8677 (for University Hospital)

Tel +81-43-222-7171

- School of Medicine
- Faculty of Pharmaceutical Sciences
- School of Nursing
- Graduate School of Medicine
- Graduate School of Medical and Pharmaceutical Sciences
- Graduate School of Nursing
- Medical Mycology Research Center
- Biomedical Research Center
- Center for Forensic Mental Health
- Center for Preventive Medical Sciences
- Future Medicine Research Center
- Research Center for Regenerative Therapeutics
- Research Center for Child Mental Development
- University Library -Library of Health Sciences
- University Hospital

International Student Division

(General Student Service Center)

For international students and applicants from overseas

Tel : +81-43-290-2193, 2197

Fax : +81-43-290-2198

E-mail : dge2195@office.chiba-u.jp

MATSUDO CAMPUS

648, Matsudo, Matsudo-shi, Chiba,

271-8510 Japan

Tel +81-47-308-8706

Fax +81-47-308-8720

-
- Faculty of Horticulture
 - Graduate School of Horticulture
 - University Library -Library of Horticultural Sciences

KASHIWANOHA CAMPUS

6-2-1, Kashiwanoha, Kashiwa-shi, Chiba,

277-0882 Japan

Tel +81-4-7137-8000

Fax +81-47-137-8008

-
- Center for Environment, Health and Field Sciences

SUMIDA SATELLITE CAMPUS

1-19-1, Bunka, Sumida-ku, Tokyo

131-0044 Japan

E-mail: sumida-jimu@chiba-u.jp

-
- Design Research Institute (dri)

AD ALTIORA SEMPER
UNIVERSITAS CHIBA

2021
2022

CHIBA UNIVERSITY

1-33, Yayoi-cho, Inage-ku, Chiba-shi, Chiba, 263-8522 Japan
www.chiba-u.ac.jp/e

Copyright (C) 2021-2022 Chiba University. All Rights Reserved.



2021
•
2022

DATA SUMMARY



CHIBA UNIVERSITY

Contents

01 Internationalization

01-1	Partner Universities and Institutions	01
01-2	Double Degree Programs	09

02 Overview

02-1	Number of Students / Number of Staff	10
02-2	International Student Enrolment	11
02-3	International Research Exchange / University Fees	12
02-4	University Library	13
02-5	Schools and Center Attached to Faculty of Education	14
02-6	Organization Chart	15
02-7	Administrative Staff	15

Campus Locations and General Contacts 16

Department Name					
All	Inter-institute	G.ED	Graduate School of Education	G.A	Graduate School of Advances Integration Science
Litt	Faculty of Letters	G.S.E	Graduate School of Science and Engineering	CEReS	Center for Environmental Remote Sensing
L.P.E	Faculty of Law, Politics and Economics	G.S.H	Graduate School of Horticulture	MCRC	Molecular Chirality Research Center
Edu	Faculty of Education	G.M.P	Graduate School of Medical and Pharmaceutical Sciences	CFS	Center for Frontier Science
Sc	Faculty of Science	G.N	Graduate School of Nursing	MMRC	Medical Mycology Research Center
Eng	Faculty of Engineering	G.H	Graduate School of Humanities	CEHFS	Center for Environment, Health and Field Sciences
Hort	Faculty of Horticulture	G.S.S	Graduate School of Social Science	CFME	Center for Frontier Medical Engineering
Med	School of Medicine	G.S	Graduate School of Science	CFMH	Center for Forensic Mental Health
Pharm	Faculty of Pharmaceutical Sciences	G.E	Graduate School of Engineering	CPMS	Center for Preventive Medical Sciences
Nur	School of Nursing	G.M	Graduate School of Medicine	A.L.C	Academic Link Center
LL&Econ	Faculty of Law and Economics	G.P	Graduate School of Pharmaceutical Sciences	Hosp.	University Hospital
G.S.H.S.PA	Graduate School of Humanities and Studies on Public Affairs	3Pharm	GP + GMP + Pharm	IEEI	Institute for Excellence in Educational Innovation
		G.H.S	Graduate School of Humanities and Social Sciences	SJTU-CUICRC	Shanghai Jiao Tong University and Chiba University International Cooperative Research Center

Partner Universities and Institutions

Africa

● Student exchange agreement

Country/Area	University/Institute	Starting Date	Department
Egypt	National Authority for Remote Sensing and Space Sciences	Dec 2017	All
Ghana	University of Ghana	College of Agriculture and Consumer Sciences, Forest and Horticultural Crops Research Centre	Jun 2014 CEHFS
Uganda	Busitema University	Sep 2020	All
Kenya	● Jomo Kenyatta University of Agriculture and Technology	May 2019	All

Asia

Country/Area	University/Institute	Starting Date	Department
Cambodia	● Royal University of Phnom Penh	Dec 2009	All
	● Anhui Medical University	Jun 2010	All
	● Beihang University	School of Mechanical Engineering and Automation	Mar 2019 Eng, G.S.E, G.E
	Beijing Detao Masters Academy	Jun 2011	Eng, G.E
	● Beijing Forestry University	Sep 2016	All
	● Beijing Forestry University	School of Landscape Architecture	Sep 2001 Hort, G.S.H
	● Beijing Institute of Graphic Communication	Sep 2011	All
	● Beijing Institute of Technology	Aug 2018	All
	Beijing Jiaotong University	School of Electronic and Information Engineering	Aug 2019 Eng, G.S.E, G.E
	● Beijing University of Posts and Telecommunications	Jun 2016	All
	● Central South University	Sep 2016	All
	● Changchun University of Science and Technology	Apr 2017	All
	● China Academy of Art	Mar 2013	All
	● China Agricultural University	Oct 2001	All
	China Medical University	Jun 2013	All
	China Pharmaceutical University	School of Pharmacy	Feb 1996 3Pharm
	● China University of Geosciences, Wuhan	School of Automation	Mar 2018 Eng, G.S.E, G.E
	● China West Normal University	Sep 2018	All
	● Chinese Academy of Agricultural Sciences	Institute of Agricultural Resources and Regional Planning	May 2016 Hort, G.S.H
	Chinese Academy of Sciences	Hefei Institute of Physical Sciences	Apr 1997 CEReS
	● Chinese Academy of Sciences	Institute of Geographical Sciences and Natural Resources Research	Aug 2005 Hort, G.S.H
	Chinese Academy of Sciences	Institute of Subtropical Agriculture	Oct 2015 Hort, G.S.H
	Chinese Academy of Sciences	Tian Shan Glaciological Station, Lanzhou Cold and Arid Regions Environment and Engineering Research Institute	Jul 2007 G.S
	Chinese Academy of Social Sciences	Institute of Ethnic Literature	Mar 2013 G.S.H.S.P.A
	● Chongqing University	Oct 2020	All
	● Communication University of Zhejiang	Oct 2019	All
	Dalian Medical University	Nov 2015	All
	● Dalian Medical University	School of Nursing	May 2016 Nur, G.N
	Dalian Medical University	The First Affiliated Hospital	Jul 2019 Hosp.
	Dalian Medical University	The First Affiliated Hospital	Nov 2019 Nur, G.N
	Dalian Medical University	The Second Hospital	Jul 2019 Hosp.
	● Dalian University of Technology	Dec 2013	All
	● Donghua University	May 2018	All
	East China Normal University	Oct 2018	All
	● East China University of Science and Technology	Dec 2013	All
	● Fudan University	Nov 2017	All
	● Fudan University	School of Nursing	Nov 2017 Nur, G.N
	● Guangzhou Academy of Fine Arts	Dec 2016	All
	Guangzhou Academy of Fine Arts	Nov 2019	G.S.E
	Guizhou Medical University	Jan 2009	MMRC
	Guizhou Minzu University	College of Literature	Dec 2018 G.H
	● Guizhou University	Jun 2006	All
	● Harbin Institute of Technology	Sep 2018	All
	Hebei Medical University	Mar 2017	All
	Hong Kong Baptist University	School of Chinese Medicine	Nov 2013 G.P
	Huaqiao University	Apr 2018	All
	Huaqiao University	Institute of Industry Design and Research	Nov 2017 Eng, G.S.E, G.E
	● Hubei University	Dec 2019	All
	● Hunan Agricultural University	School of Horticulture and Landscape	Aug 2019 Hort, G.S.H
	● Hunan Normal University	Mar 2018	All
	● Hunan University	May 1985	All
	Inner Mongolia University	School of Mongolian Studies	Jun 2014 G.S.H.S.P.A
	● Institute of Environment and Sustainable Development in Agriculture	Feb 2020	All
	● Jiangnan University	Dec 2018	All
	● Jiangnan University	School of Design	Feb 2008 Eng, G.S.E, G.E
	● Jiangsu University	Mar 2018	All
	● Jiangsu University	Faculty of Agricultural Equipment	Oct 2018 G.S.H, CEHFS
	Jiangsu University	School of Agricultural Equipment Engineering, Institute of Agricultural Engineering	Apr 2017 CEHFS

Country/Area	University/Institute	Starting Date	Department
China	Jiangxi University of Finance and Economics	Dec 2019	All
	Jilin University	Jun 2019	Sc, G.S
	Jilin University	Feb 2008	MMRC
	● Jinan University	Jan 2020	G.M
	● Lanzhou University	Jul 2019	All
	● Ludong University	May 2014	All
	● Minzu University of China	Feb 2009	All
	● Minzu University of China	School of Pharmacy	Sep 2020 Pharm, G.P
	● Nanjing Agricultural University	Sep 2002	All
	Nanjing Agricultural University	Jul 2015	G.S.H
	● Nanjing Forestry University	Jun 2018	All
	● Nanjing University of Aeronautics and Astronautics	College of Mechanical and Electrical Engineering	Nov 2018 Eng, G.S.E, G.E
	● Nanjing University of Information Science and Technology		Apr 2011 All
	● Nanjing University of the Arts	School of Industrial Design	Jan 2017 G.E
	Northeast Normal University	Nov 2014	All
	● Northwestern Polytechnical University	Mar 2017	All
	● Northwestern Polytechnical University	School of Mechanical Engineering	Oct 2019 Eng, G.S.E, G.E
	Peking University	Earthquake Monitoring and Prediction Technology Research Center (EMPTRC), Shenzhen Graduate School	Sep 2019 Sc, G.S
	Peking University	School of Earth and Space Sciences	Mar 2010 Sc, G.S
	● Qingdao University of Technology	School of Architecture and Urban Planning	Jun 2015 Hort, G.S.H
	● Shandong Agricultural University		May 2008 G.S.H
	Shandong University	School of Physics	Oct 2014 Eng, G.S.E, G.E
	Shanghai International Studies University	School of Japanese Studies	Dec 2019 G.H
	● Shanghai Jiao Tong University		Oct 2002 All
	Shanghai Jiao Tong University	Engineering Research Center of Digital Medicine, Ministry of Education of PRC	Dec 2010 CFMH
	Shanghai Jiao Tong University	School of Agriculture and Biology	Jul 2011 G.S.H
	Shanghai Jiao Tong University	School of Naval Architecture, Ocean and Civil Engineering	Jan 2010 G.E
	● Shanghai University		May 2018 All
	● Shenyang Agricultural University	College of Agronomy, College of Water Conservancy, College of Food Science, College of Agricultural Engineering, College of Forestry and College of Economics and Trade	Mar 2000 Hort, G.S.H
	Shenyang Pharmaceutical University		Feb 2004 3Pharm
	● Sichuan University	College of Environment and Architecture	Sep 2018 Hort, G.S.H
	Soochow University	Institute of Functional Nano & Soft Materials	Feb 2011 G.A
	● South China Agricultural University	College of Agriculture	Dec 2016 Hort, G.S.H
	● South China University of Technology		Dec 2019 All
	South University of Science and Technology	School of Earth and Space Sciences	Jul 2018 Sc, G.S.E, G.S
	● Tianjin University of Traditional Chinese Medicine		Sep 2013 All
	● Tongji University	College of Design and Innovation/Shanghai International College of Design and Innovation	Feb 2008 Eng, G.S.E, G.E
	● Tsinghua University		Dec 2007 All
	● Tsinghua University	School of Architecture	Aug 2007 G.S.H
	Tsinghua University	Yangtze Delta Region Institute	Sep 2007 G.S.H
	University of Electronic Science and Technology of China	School of Electronic Engineering	Mar 2015 G.E
	● University of Electronic Science and Technology of China		Dec 2015 All
	University of Hong Kong	School of Nursing	Mar 2018 G.N
	● University of Jinan		Jun 2017 All
	● University of Science and Technology Beijing	School of Automation and Electrical Engineering	Dec 2013 Eng, G.S.E, G.E
	● Xi'an Jiaotong University		Jul 2017 All
	● Xi'an University of Technology	Graduate School and Faculty of Mechanical and Precision Instrument Engineering	Jul 2014 Eng, G.S.E, G.E
	Xiangtan University		May 2017 All
	● Xiangtan University	College of Information Engineering	Feb 2017 G.A
	● Xihua University	School of Materials Science and Engineering	Oct 2017 Eng, G.S.E, G.E
	● Xinjiang Normal University		May 2010 All
	● Yantai University		Jan 2016 All
	● Zhejiang Gongshang University		May 2012 All
	Zhejiang Gongshang University	School of Oriental Language and Culture	Dec 2017 G.S.H.S.P.A
	● Zhejiang Normal University	College of Engineering	Mar 2020 Eng, G.S.E, G.E
	● Zhejiang University		Jun 2010 All
	Zhejiang University	College of Computer Science and Technology	Feb 2018 G.S.E
	● Zhejiang University	College of Pharmaceutical Sciences	May 2020 G.P
	● Zhengzhou University		Jan 2020 All
India	Jawaharlal Nehru Agricultural University		Nov 2017 Edu
	● National Institute of Design		Apr 2017 All
	● PDPM Indian Institute of Information Technology, Design and Manufacturing Jabalpur		Jun 2012 All
	● SRM University	Faculty of Sciences and Technology	Jun 2016 Pharm
	● Tamil Nadu Agricultural University	International Cell, Directorate of Planning and Monitoring	Sep 2010 Hort, G.S.H
Indonesia	● University of Agricultural Sciences	College of Agriculture-Bangalore	Jan 2013 Hort, G.S.H
	● Bandung Institute of Technology		Mar 2006 All
	Bandung Institute of Technology	Faculty of Earth Sciences and Technology	Oct 2012 G.S.E, CEReS
	● Banka Belitung University		Dec 2020 All
	● Budi Luhur University	Center for Environmental Studies	Dec 2015 CEReS
	● Diponegoro University		Aug 2012 All
	● Gadjah Mada University		Oct 1990 All

Country/Area	University/Institute	Starting Date	Department
Indonesia	Gadjah Mada University	Faculty of Geography	Jul 2012 G.S.E, CEReS
	● Gadjah Mada University	Faculty of Mathematics and Natural Sciences	Sep 2009 Eng, G.E
	● Hasanuddin University		Sep 2007 All
	Hasanuddin University	Faculty of Mathematics and Natural Sciences, Postgraduate Studies Program, and Centre for Research and Community Development	Jul 2012 CEReS, G.A
	Indonesia University of Education		Aug 2018 Edu, G.ED
	Indonesian Institute of Sciences	Research Center for Geotechnology	Mar 2001 Sc, G.S
	● Indonesian Institute of Sciences	Research Center for Chemistry	May 2013 Eng, G.E
	● IPB University		Mar 2010 All
	● IPB University	Graduate School	Mar 2010 G.S.H
	● Islamic University of Riau		Nov 2016 All
	Lambung Mangkurat University	Faculty of Agriculture	Aug 2006 Hort, G.S.H
	Meteorology, Climatology and Geophysics Agency		Nov 2008 Sc, G.S
	● Meteorology, Climatology and Geophysics Agency		Nov 2014 All
	● Mulawarman University	Faculty of Mathematics and Natural Science	Jun 2015 CEReS
	● Padjadjaran University		Jan 2011 All
	Padjadjaran University	Faculty of Mathematics and Natural Sciences, Faculty of Agriculture, Faculty of Agricultural-Industrial Technology	Nov 2012 G.S.E, G.S.H, CEReS, CEHFS
	Regency of Siak		Nov 2016 CEReS
	● Sebelas Maret University		Nov 2017 All
	● Sepuluh Nopember Institute of Technology		Jul 2012 All
	State University of Makassar	Postgraduate Program	Jun 2014 G.S.H
	● State University of Padang	Faculty of Mathematics and Natural Science	Sep 2015 CEReS
	● Syiah Kuala University		Aug 2017 All
	● Udayana University		Jul 2007 All
	Udayana University		Dec 2013 CEReS
	Udayana University	Postgraduate Program	Jul 2012 G.S.E, CEReS
	● University of AMIKOM Yogyakarta	Faculty of Science and Technology	Jul 2020 CEReS
	● University of Indonesia		Dec 1997 All
	University of Indonesia	Faculty of Engineering, Faculty of Mathematics and Natural Science	Jul 2012 CEReS, G.E, G.A
	West Java province	Education Department	Aug 2016 Edu
Korea	● Ajou University		Nov 2015 All
	● Chonnam National University	College of Agriculture and Life Sciences	Jun 2004 Hort, G.S.H
	● Chosun University		Sep 2011 All
	● Chung-Ang University		Jun 2017 All
	Chungnam National University	College of Agriculture and Life Sciences	Jul 2012 CEHFS
	● Geumgang University		Jun 2015 All
	● Hankyong National University		Mar 2018 All
	● Incheon National University		Dec 2017 All
	● Inha University	College of Economics & International Trade	Jul 2012 L.P.E
	● Inje University		Jan 2017 All
	● Inje University	College of Medicine	Jun 2012 Med, G.M
	● Jeonbuk National University		Mar 2004 All
	● Kangwon National University		Sep 2018 All
	● Kongju National University		Jan 2017 All
	● Kookmin University		Nov 2017 All
	● Korea University	School of Art and Design	Jan 2019 Eng, G.S.E, G.E
	● Kyung Hee University		Dec 2016 All
	● Myongji University		Mar 2017 All
	● Pukyong National University		Feb 2016 All
	● Pusan National University		Jul 2019 All
	● Seoul National University		Aug 2011 All
	● Seoul National University	College of Agriculture and Life Sciences	Jun 2004 Hort, G.S.H
	● Seoul National University	College of Fine Arts	Mar 2005 Eng, G.E
	Seoul National University	College of Nursing	Mar 2016 G.N
	Seoul National University	College of Pharmacy	May 2010 3Pharm
	● Seoul National University of Science and Technology		Dec 2017 All
	● Sookmyung Woman's University		Nov 2017 All
	● Sungkyunkwan University		Nov 2015 All
	● Sungshin University		Jan 2019 All
	● Ulsan National Institute of Science and Technology		Nov 2017 All
	Ulsan National Institute of Science and Technology	School of Design and Human Engineering	Jun 2014 Eng, G.E
	● University of Seoul		Jul 2018 All
	Yongin Kangnam School		Sep 2019 Edu
Laos	Yonsei University	College of Engineering and Active Polymer Center for Pattern Integration	Apr 2010 Eng, G.E, G.A
	Yonsei University	Graduate School	Oct 2018 G.S.E
	● Yonsei University Mirae Campus		Oct 2010 All
	● National University of Laos	Faculty of Education	Jan 2018 Edu
	Monash University Malaysia		Jun 2020 All
	● Multimedia University		Sep 2010 All
	● Taylor's University	School of Biosciences	May 2016 Hort, G.S.H
	● Tenaga Nasional University		Sep 2016 All
	Universiti Sultan Zainal Abidin	Faculty of General Studies and Advanced Education, Faculty of Applied Social Sciences	Feb 2019 Litt, G.S.H.S.P.A, G.H
	● University of Malaysia, Sarawak		Apr 2010 All
Malaysia	● University of Malaya		Feb 2013 All
	University of Malaya	Faculty of Science	Dec 2015 G.A

Country/Area	University/Institute		Starting Date	Department
Malaysia	● University Putra Malaysia		Aug 2016	All
	University Putra Malaysia		Aug 2011	Hort, G.S.H
Myanmar	● Mandalay Technological University		Nov 2017	Eng, G.S.E, G.E
	● University of Medicine 1, Yangon		Mar 2017	G.M
	● Yezin Agricultural University		Sep 2014	G.S.H
Philippines	● Ateneo de Manila University		Nov 2016	All
	International Rice Research Institute		Jun 2007	G.S.H
	Pangasinan State University	College of Teacher Education	Jan 2017	Edu, G.ED
	University of San Carlos	School of Education	May 2019	Edu, G.ED
	University of Santo Tomas	College of Science, Graduate School, Research Center for the Natural Sciences	May 2009	3Pharm
	● University of the Philippines Los Baños		May 2013	All
	Nanyang Technological University		Nov 2007	All
	Singapore	● Nanyang Technological University	Lee Kong Chian School of Medicine	Jan 2017
● Nanyang Technological University		School of Mechanical and Aerospace Engineering	Sep 2012	Eng, G.E
National University of Singapore		NUS Libraries	Feb 2019	A.L.C
● National University of Singapore		School of Design and Environment, Department of Architecture	Jan 2015	Eng, Hort, CEHFS
● Singapore University of Technology and Design			Apr 2015	All
● Asia University			Mar 2020	All
Taiwan	China Medical University	College of Pharmacy	Jan 2018	Pharm
	● Chung Yuan Christian University		Oct 2018	All
	Kaohsiung Medical University		May 2012	All
	Ming Chuan University		Nov 2015	All
	● Ming Chuan University	School of Design	Nov 2012	Eng, G.S.E, G.E
	● National Central University		Nov 2017	All
	National Central University	College of Earth Science	Dec 2012	Sc, G.S
	● National Chengchi University		Aug 2018	All
	● National Cheng Kung University		Dec 2006	All
	● National Chung Hsing University	College of Agriculture and Natural Resources	Mar 2021	Hort, G.S.H
	● National Kaohsiung Normal University		Jul 2019	All
	● National Sun Yat-sen University		Sep 2019	All
	National Taichung University of Education		Aug 2019	All
	● National Taipei University of Education		Mar 2016	All
	● National Taipei University of Technology	College of Design	Mar 2018	Eng, G.S.E, G.E
	● National Taiwan Normal University		Apr 2019	All
	● National Taiwan Normal University	College of Education	Jul 2013	Edu, G.ED
	National Taiwan University		Nov 2008	All
	● National Taiwan University	College of Medicine	Feb 2020	Med, G.M
	● National Taiwan University of Arts		Jul 2012	All
	● National Tsing Hua University		Feb 2015	All
	● National University of Kaohsiung		Oct 2018	All
	● National Yang Ming Chiao Tung University		May 2016	All
	● National Yang Ming Chiao Tung University	College of Humanities and Social Sciences	Dec 2013	Eng, G.S.E, G.E
	● National Yang Ming Chiao Tung University	College of Science	Jan 2010	Eng, G.S.E, G.E
	National Yang Ming Chiao Tung University	College of Science	Apr 2018	MCRC
	National Yunlin University of Science and Technology		Dec 2006	All
	● National Yunlin University of Science and Technology	College of Design	Aug 2009	Eng, G.S.E
	● Shih Chien University		Feb 2019	All
	● Southern Taiwan University of Science and Technology		Dec 2006	All
	● Taipei Medical University		Nov 2017	All
	● Taipei Medical University	College of Medicine	Sep 2016	G.M
	● Tamkang University		Dec 2019	All
	● Tatung University		Aug 2017	All
● Tunghai University		Sep 2008	All	
● Tunghai University	College of Fine Arts and Creative Design	Jul 2018	Eng, G.S.E, G.E	
Thailand	● Wenzao Ursuline University of Languages		Apr 2017	All
	● Asian Institute of Technology		Aug 2012	All
	● Burapha University	Department of Food Science, Faculty of Science	Oct 2020	Hort, G.S.H
	● Chiang Mai University		Jun 2015	All
	● Chiang Mai University	Faculty of Pharmacy	Feb 1996	3Pharm
	● Chulabhorn Graduate Institute		Nov 2013	All
	Chulabhorn Research Institute		Dec 2019	All
	● Chulalongkorn University		Sep 2000	All
	● Chulalongkorn University	Faculty of Pharmaceutical Sciences	Apr 1990	Pharm, G.M.P
	● Kasetsart University		Mar 2000	All
	● Khon Kaen University		Dec 2017	All
	Khon Kaen University	Faculty of Nursing	Feb 2015	G.N
	● King Mongkut's University of Technology North Bangkok	Sirindhorn International Thai-German Graduate School of Engineering	Oct 2017	G.S.E, G.E
	● King Mongkut's University of Technology Thonburi		Mar 2013	All
	● King Mongkut's University of Technology Thonburi	School of Bioresources and Technology	Aug 2014	G.S.H
	● Mae Fah Luang University		Aug 2016	All
	● Mae Fah Luang University	School of Agro-Industry	Aug 2008	Hort, G.S.H
	● Maejo University		Aug 2018	All
	● Mahasarakham University	Faculty of Technology	Sep 2016	Hort, G.S.H
	● Mahidol University		Oct 2008	All
	● Mahidol University	Faculty of Pharmacy	Apr 2000	3Pharm
	● Mahidol University	Faculty of Science	Mar 2009	G.S.H
	Mahidol University	Faculty of Social Sciences and Humanities	Mar 2019	Edu

Country/Area	University/Institute	Starting Date	Department	
Thailand	Mekong Institute	Feb 2018	All	
	● Naresuan University	Oct 2020	All	
	National Center for Genetic Engineering and Biotechnology	Jul 2004	G.S.H	
	● Prince of Songkla University	May 1996	All	
	● Rajamangala University of Technology Isan, Sakon Nakhon Campus	Mar 2020	All	
	● Rajamangala University of Technology Thanyaburi	Mar 2015	All	
	● Rangsit University	Aug 2017	All	
	● Rangsit University	Faculty of Architecture	Feb 2016	G.E
	● Siam University	Mar 2018	All	
	● Silpakorn University	Mar 2011	All	
	Silpakorn University	Faculty of Pharmacy	Dec 2002	3Pharm
	● Srinakharinwirot University	Faculty of Pharmacy	Oct 2016	Pharm
	Suan Sunandha Rajabhat University		May 2018	All
	● Thai-Nichi Institute of Technology		Jan 2010	All
	Thammasat University	Sirindhorn International Institute of Technology	Dec 2008	CFME
Vietnam	● Thammasat University	Sirindhorn International Institute of Technology	Apr 2016	Eng, G.E
	● Hanoi University		Jul 2019	All
	● Ho Chi Minh City University of Technology	Faculty of Chemical Engineering	Mar 2017	G.A
	● Ho Chi Minh City University of Technology and Education		Mar 2017	All
	● Hong Bang International University		Mar 2017	All
	● International University		Dec 2015	All
	● Nong Lam University		Feb 2013	All
	● University of Medicine and Pharmacy at Ho Chi Minh City		Aug 2017	G.M
	Vietnam National University of Agriculture		Feb 2003	Hort, G.S.H
	Vietnam National University of Forestry		Dec 2014	CEReS
	● Vietnam National University, Hanoi	Faculty of Education	Jun 2003	Edu, G.ED
	● Vietnam National University, University of Social Sciences and Humanities, Hanoi		Aug 2019	All

Europe

Country/Area	University/Institute	Starting Date	Department	
Austria	Medical University of Vienna	Jun 2010	All	
Belgium	● Catholic University of Louvain	Faculty of Bioscience Engineering, Institute of Condensed Matter and Nanosciences	Oct 2014	Eng, G.S.E, G.E
	● University of Liège		May 2018	All
Czech Republic	● University of Ostrava		Dec 2018	All
Denmark	● Aarhus University	Faculty of Health	Oct 2016	G.M
Finland	● Aalto University, School of Arts, Design and Architecture		Jun 2008	All
	● Seinäjoki University of Applied Sciences		Sep 2000	All
	● Tampere University		May 2018	All
	● University of Tampere	School of Education	Dec 2011	Edu, G.ED
	● University of Eastern Finland		Sep 2004	All
	● University of Jyväskylä		Feb 2016	All
	● University of Lapland		Apr 2009	All
France	● Claude Bernard University Lyon 1	Faculty of Sciences and Technologies Engineering School Polytech Lyon	Mar 2018	Eng, G.S.E, G.E
	● Ecole Nationale Supérieure Création Industrielle		Feb 2010	All
	Ecole normale supérieure Paris-Saclay		May 2017	All
	Ecole Supérieure d'Ingenieurs en Electrotechnique et Electronique d'AMIEN		May 2019	Eng, G.S.E, G.E
	● ESIGELEC – School of engineering Rouen FRANCE		Sep 2009	All
	● IFP School		Oct 2017	G.S.E, G.E
	IAB(Institute for Advanced Biosciences)/Inserm-CNRS-UnivGrenoble-Alpes(U1209)	Joint Research Center	Apr 2016	CPMS
	● Nantes Atlantique School of Design		Jan 2010	All
	● National School of Architecture, Paris la Villette		Mar 2015	Eng, G.E
	Nice Sophia Antipolis University		Dec 2017	All
Germany	● Nice Sophia Antipolis University	Faculty of Medicine	Jun 2016	G.M, CPMS
	● Polytechnic Institute LaSalle Beauvais - ESITPA		Jul 2016	All
	● Strate School of Design		Jun 2010	All
	● Toulouse III - Paul Sabatier University	Faculty of Sciences and Engineering	Apr 2019	Eng, G.S.E, G.E, CFME
	● University of Burgundy		May 2018	All
	University of Burgundy	International Center for French Studies	Nov 2015	IEEI
	● University of Cergy-Pontoise	Faculty of Sciences and Technologies	Jul 2017	Eng, G.S.E, G.E
	University of Cote d'Azur		Dec 2017	All
	● University of Cote d'Azur	Faculty of Medicine	Jun 2016	G.M, CPMS
	● University of Rennes 1		May 2008	All
	● University Paris-Est Creteil Val de Marne		Sep 2007	All
	● Augsburg University of Applied Sciences		Apr 2020	All
	Charité - Universitätsmedizin Berlin		Oct 2010	All
	● Dresden University of Applied Science		Jun 2015	All
	● Dresden University of Technology	Faculty of Architecture	Mar 2014	Hort, G.S.H
Germany	● Free University of Berlin, Faculty of History and Cultural Studies		Jul 2016	All
	● Friedrich Schiller University Jena		Sep 2019	Eng, G.S.E, G.E
	German Rheumatism Research Center Berlin		Aug 2013	CPMS

Country/Area	University/Institute	Starting Date	Department	
Germany	● Heidelberg University	Mar 2010	All	
	● Heinrich Heine University Düsseldorf	May 2007	All	
	Humboldt-University	May 2010	All	
	Humboldt University of Berlin	Faculty 1 of Mathematics and Natural Sciences, Integrative Research Institute for the Sciences	Mar 2010	G.A
	● Karlsruhe Institute of Technology	Physical Institute	Dec 2011	G.S.E, G.A
	● Leibniz University of Hannover	Faculty of Architecture and Landscape Sciences	Oct 2012	Hort, G.S.H
	● Rosenheim University of Applied Sciences		Nov 2013	All
	Technical University of Braunschweig		Feb 2014	All
	● TH Köln - Technology, Arts, Sciences		Nov 2012	All
	TH Köln - Technology, Arts, Sciences	Faculty of Cultural Sciences	Jan 2018	G.S.E
	● University of Augsburg	Faculty of Mathematics and Natural Sciences	Dec 2010	G.A
	● University of Bayreuth	Faculty of Engineering Science	Sep 2007	Eng, G.S.E, G.E
	● University of Göttingen		May 1982	All
	● University of Leipzig		Mar 2000	All
Greece	University of Wuerzburg	Institute of Physics and Astronomy	Sep 2009	Eng, G.S.E, G.E
	● Weihenstephan · Triesdorf University of Applied Science		Mar 2020	Hort, G.S.H
Hungary	● Aristotle University of Thessaloniki		Feb 2014	All
	● Szent István University	Faculty of Agricultural and Environmental Science	Feb 2001	Hort, G.S.H
Ireland	● University of Debrecen		Dec 1996	All
	National University of Ireland, University College Dublin		Jul 2016	All
Italy	● International University of Languages and Media		May 2020	All
	● ISIA Roma Design		May 2012	All
	● Iuav University of Venice		Jul 2012	Eng, G.S.E, G.E
	● Polytechnic University of Milan		Oct 2009	All
	Sapienza University of Rome		Feb 2013	All
	University of Basilicata	School of Engineering	Apr 2015	Sc, G.S
	● University of Bologna	School of Agriculture and Veterinary Medicine	Dec 2013	Hort, G.S.H
	● University of Florence	Department of History Archaeology, Geography, Fine and Performing Art (SAGAS)	Mar 2011	G.H.S
	● University of Naples Federico II	Department of Electrical Engineering and Information Technology	Sep 2017	Eng, G.S.E, G.E
	University of Trento	Department of Civil, Environmental and Mechanical Engineering	Oct 2017	Eng, G.S.E, G.E
Netherlands	● University of Udine		Apr 2020	All
	● Eindhoven University of Technology	Department of Industrial Design	Oct 2009	Eng, G.S.E, G.E
Norway	● Inland Norway University of Applied Sciences	Faculty of Education	Jul 2020	Edu, G.ED
	● Norwegian University of Science and Technology	Faculty of Information Technology and Electrical Engineering	Sep 2014	Eng, G.S.E, G.E
Portugal	● IADE		Mar 2013	All
Russia	● Far Eastern State Agrarian University		Apr 2019	All
	● Lomonosov Moscow State University		May 2007	All
Russia	● National Research University Higher School of Economics, Russia		Sep 2013	All
	● Novosibirsk State Agrarian University		Jun 2019	All
	● Novosibirsk State Pedagogical University		Mar 2020	All
	● Peter the Great St. Petersburg Polytechnic University		May 2017	All
	● Primorskaya State Academy of Agriculture		Mar 2017	All
	● Russian State University for the Humanities		Jul 2009	All
	● Ryazan State University named for S. Yesenin		Oct 2015	All
	● Sakhalin State University		May 2017	All
	● Ural Federal University		Dec 2017	All
Spain	● Autonomous University of Madrid	Madrid Institute for Advanced Studies in Nanoscience	Jan 2012	G.A
	● International University of Catalonia	School of Architecture	Jul 2017	Eng, G.S.E, G.E
	● University of Salamanca		Dec 2015	All
	● University of the Basque Country		Sep 2017	All
Sweden	● Linköping University		Feb 2007	All
	● Mid Sweden University	Faculty of Science, Technology and Media	Mar 2015	Eng, G.E
	● Swedish University of Agricultural Sciences	Faculty of Landscape Planning, Horticulture and Agricultural Sciences	Nov 2011	Hort, G.S.H
Switzerland	Uppsala University		Oct 2008	All
	● Bern University of Applied Sciences		Dec 2012	All
U.K.	● University of Neuchatel	Faculty of Economics and Business	Jun 2019	L.P.E, G.S.H.S.P.A, G.S.S
	Arts University Bournemouth		Dec 2013	IEEI
	● Glasgow School of Art		Oct 2011	All
	Leeds Beckett University	Faculty of Health and Social Sciences	Jun 2014	Edu
	● Northumbria University		Nov 2015	All
	University College London, Institute of Education		Mar 2011	All
	● University of Durham		Jul 2019	All
	● University of Leicester	Leicester Medical School	Aug 2017	G.M
	● University of Sheffield	Department of Landscape	Mar 2013	Hort, G.S.H
	University of Ulster	School of Nursing	Apr 2019	Nur, G.N
	University of Warwick	Faculty of Arts	Oct 1990	Litt
● York St John University		Apr 2018	All	

Latin America

Country/Area	University/Institute	Starting Date	Department
Brazil	Federal University of Rio Grande do Sul	Jun 2017	G.M
	State University of Campinas	Sep 2001	All
	● University of São Paulo	Jun 2020	Eng, G.S.E, G.E, CFME
Mexico	● Autonomous University of Aguascalientes	Oct 2011	All
	● Ibero-American University	Nov 2016	All
	● Marist University of Merid	Jan 2019	All
	● Metropolitan Autonomous University	Sep 2018	All
	● Monterrey Institute of Technology and Higher Education	Feb 2016	All
	● National Autonomous University of Mexico	Sep 2015	Eng, G.E
	● Panamerican University	Dec 2015	All
	● University of Guadalajara	Jan 2017	All
	University of Guanajuato	Feb 2018	All
	● University of Monterrey	Jul 2014	All
Panama	● University of Veracruz	Sep 2013	All
	Panama University	Nov 2014	CEHFS
	● Panama University of Technology	Jan 2016	All
Peru	National University of Engineering	Jan 2011	All

Middle East

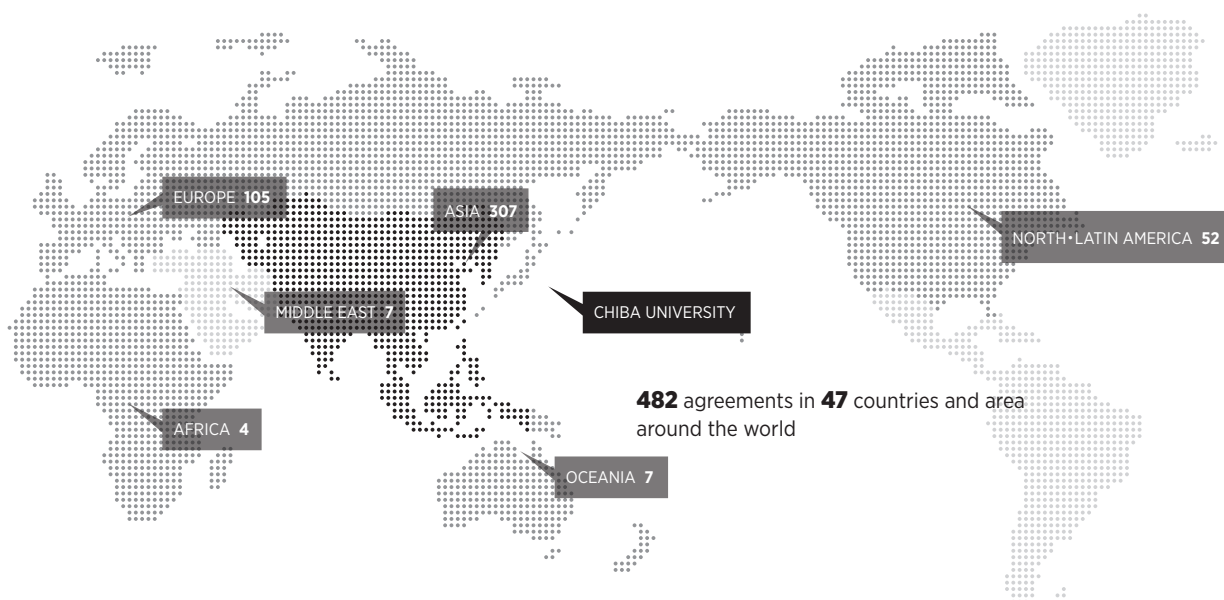
Country/Area	University/Institute	Starting Date	Department
Iraq	Mustansiriyah University	Feb 2018	All
	University of Baghdad	Feb 2017	All
Turkey	● Akdeniz University	Jun 2011	All
	● Istanbul Technical University	Mar 2013	All
	● Izmir University of Economics	Sep 2013	Eng, G.S.E, G.E
	● Yildiz Technical University	Oct 2013	All
UAE	● Ajman University	Aug 2017	Eng, G.E

North America

Country/Area	University/Institute	Starting Date	Department
Canada	Carleton University	May 2018	All
	Governing Council of the University of Toronto	Mar 2019	G.M
	● Lakehead University	Mar 2018	All
	● Saint Mary's University	Oct 2017	All
	● University of Alberta	Sep 1996	All
	University of Alberta	Jan 1987	Pharm
	University of British Columbia	May 2014	Hort, G.S.H
	● University of Prince Edward Island	May 2016	All
	● University of Regina	May 2017	All
	● University of the Fraser Valley	Dec 2019	All
U.S.A.	University of Waterloo	May 2016	Sc, G.S, CFS
	Chapman University	Dec 2012	Sc, G.S
	● College for Creative Studies	Nov 2015	All
	● Concordia University Wisconsin	Sep 2020	All
	Harvard School of Public Health	Jun 2014	CPMS
	● Stony Brook University, The State University of New York	Apr 1996	All
	The New School	Apr 2012	All
	Thomas Jefferson University	Feb 2010	Med, G.M
	● University at Buffalo, The State University of New York	Oct 2010	Eng, G.S.E, G.E
	● University of Alabama	Jan 1984	All
	University of Alabama at Birmingham	Aug 1990	Nur
	University of Arizona	May 2005	All
	University of California, San Diego	Aug 2015	G.M
	● University of Cincinnati	Jul 2012	All
	● University of Hawaii at Manoa	Apr 2014	Sc, G.S
	University of Hawaii at Manoa	Feb 2020	Med, G.M
	University of Houston	Aug 1990	LL&Econ
	● University of Illinois at Chicago	Sep 1996	All
	● University of Illinois	Mar 2007	Med
	University of San Diego	Jun 2011	G.N
U.S.A.	University of Southern California	Sep 2016	G.M
	University of Washington	Jun 2010	Hort, G.S.H
	University of Washington	Mar 2004	Hort, G.S.H
	● University of Wisconsin-Milwaukee	Oct 2006	All
	William Marsh Rice University	Jul 2016	All

Oceania

Country/Area	University/Institute	Starting Date	Department
Australia	● Australian National University	Mar 1996	All
	● Macquarie University	Feb 2011	All
	● Monash University	May 1994	All
	● RMIT University (Royal Melbourne Institute of Technology)	Oct 2010	All
	University of Sydney	Feb 2000	All
New Zealand	Massey University	Sep 2013	All
	University of Auckland	Mar 2012	G.M



Double Degree Programs

Chiba University has been offering double degree programs with partner universities in China, Indonesia, Korea, Taiwan, Thailand and Germany since 2008. We aim that this student exchange will nurture human resources which have international perspectives.

Country/ Area	Partner University and Department	Chiba University	Field of Study	Degree		Starting Year(FY)
				Master	Doctor	
China	Tsinghua University, School of Architecture	Graduate School of Horticulture	Horticulture	●		2008
	Shanghai Jiao Tong University, School of Naval Architecture, Ocean and Civil Engineering	Graduate School of Engineering	Robotics		●	2009
	Shanghai Jiao Tong University, School of Agriculture and Biology	Graduate School of Horticulture	Horticulture	●	●	2011
	University of Electronic Science and Technology of China, School of Electronic Engineering	Graduate School of Engineering	Electronic Engineering		●	2014
	Nanjing Agricultural University, College of Horticulture	Graduate School of Horticulture	Horticulture	●		2015
	Nanjing University of the Arts, School of Industrial Design	Graduate School of Engineering	Design	●		2016
	Beijing Forestry University, School of Landscape Architecture	Graduate School of Horticulture	Horticulture	●		2016
	Zhejiang University, College of Computer Science and Technology	Graduate School of Science and Engineering	Design	●		2017
	Zhejiang Gongshang University, School of Oriental Language and Culture	Graduate School of Humanities and Studies on Public Affairs	Chinese History	●		2017
Indonesia	Guangzhou Academy of Fine Arts	Graduate School of Science and Engineering	Design	●		2019
	IPB University, Graduate School	Graduate School of Horticulture	Horticulture	●		2009
	University of Indonesia, Faculty of Engineering, Faculty of Mathematic and Natural Science	Graduate School of Engineering, CEReS, Graduate School of Advanced Integration Science	Medical Engineering	●	●	2012
	Udayana University, Postgraduate Program	Graduate School of Science and Engineering, CEReS	Remote Sensing	●	●	2012
	Gadjah Mada University, Faculty of Geography	Graduate School of Science and Engineering, CEReS	Remote Sensing	●	●	2012
	Hasnuddin University, Faculty of Mathematics and Natural Science, Postgraduate Studies Program, Center for Research and Community Development	CEReS, Graduate School of Advanced Integration Science	Remote Sensing	●	●	2012
	Bandung Institute of Technology, Faculty of Earth Sciences and Technology	Graduate School of Science and Engineering, CEReS	Horticulture Remote Sensing	●	●	2012
	Padjadjaran University, Faculty of Mathematics and Natural Sciences, Faculty of Agriculture, Faculty of Agricultural Industrial Technology	Graduate School of Horticulture, Graduate School of Science and Engineering, CEReS, CEHFS	Horticulture Remote Sensing	●	●	2012
	Yonsei University, Graduate School	Graduate School of Science and Engineering	Design	●		2018
Taiwan	National Chiao Tung University, College of Science	Graduate School of Science and Engineering	Nonlinear Optics Nanophotonics		●	2019
Thailand	Mahidol University, Faculty of Science, Faculty of Graduate Studies	Graduate School of Horticulture	Horticulture	●	●	2016(M) 2008(D)
	Silpakorn University, Faculty of Pharmacy	Graduate School of Pharmaceutical Sciences	Pharmaceutical Sciences		●	2012
	King Mongkut's University of Technology Thonburi, School of Bioresources and Technology	Graduate School of Horticulture	Horticulture		●	2014
	Mahidol University, Faculty of Pharmacy, Faculty of Graduate Studies	Graduate School of Pharmaceutical Sciences	Pharmaceutical Sciences		●	2014
	Thammasat University, Sirindhorn International Institute of Technology	Graduate School of Engineering	Medical Engineering		●	2016
	Mae Fah Luang University, School of Agro-industry	Graduate School of Horticulture	Horticulture	●	●	2016(M) 2019(D)
	Chiang Mai University, Faculty of Pharmacy	Graduate School of Pharmaceutical Sciences	Pharmaceutical Sciences		●	2017
Germany	TH Köln - Technology, Arts, Sciences, Köln International School of Design	Graduate School of Science and Engineering	Design	●		2017

Number of Students / Number of Staff

Number of Students

Undergraduate

Faculties	Regular Students
College of Liberal Arts and Sciences	413
Faculty of Letters	769
Faculty of Law, Politics and Economics	1,584
Faculty of Law and Economics	1
Faculty of Education	1,639
Faculty of Science	885
Faculty of Engineering	2,772
Faculty of Horticulture	822
School of Medicine	716
Faculty of Pharmaceutical Sciences	448
School of Nursing	332
Total	10,381

Professional Graduate School

Professional Degree Program	Regular Students
Law School	64
Education	38
Total	102

Graduate

Faculties	Regular Students	
	Master's Program	Doctoral Program
Humanities and Social Sciences	2	30
Humanities and Studies on Public Affairs	86	65
Education	148	0
Science	0	4
Engineering	0	27
Science and Engineering	1,296	289
Horticulture	269	87
Advanced Integration Science	0	3
Medical and Pharmaceutical Sciences	155	600
Nursing	82	76
Global Degree Program of Global and Transdisciplinary Studies	9	0
Total	2,047	1,181

Number of Staff

(as of August 1, 2021)

	Executive Director	Faculty & Graduate	Center & Others	University Hospital	Library	Administrative Bureau & Area Administration Departments	Office of the President	Internal Audit Office	Total
President	1								1
Executive Vice President	7								7
Auditor	2								2
Sub Total	10								10
Professor		367	58	17					442
Associate Professor		264	48	14					326
Lecturer		67	25	34					126
Assistant Professor		163	51	166					380
Research Associates		4	0	0					4
Sub Total		865	182	231					1,278
Research Fellows		13	26	4					43
Affiliate School Teachers		99	0	0					99
Medical Staff		1	4	1,349	0	1	0	0	1,355
Admin. Staff		21	5	158	25	501	1	3	714
Sub Total		134	35	1,511	25	502	1	3	2,211
Total	10	999	217	1,742	25	502	1	3	3,499

International Student Enrollment

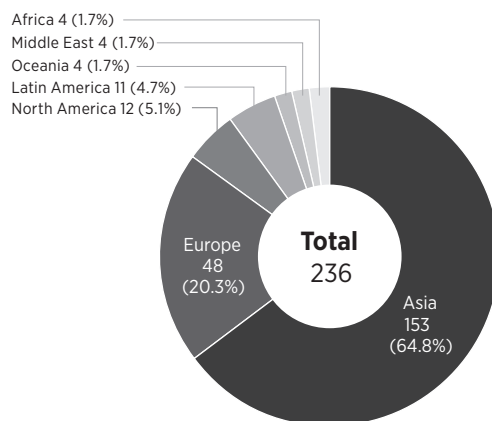
Region	Countries / Area	Undergraduate	Master's Program	Doctoral Program	Others	Total
AFRICA	Burkina Faso				1 (1)	1 (1)
	Egypt			1 (1)		1 (1)
	Ethiopia			1		1
	Gabonese				1 (1)	1 (1)
	Ghana			1 (1)		1 (1)
	Kenya			1		1
	Madagascar				1 (1)	1 (1)
	Malawi				1 (1)	1 (1)
	Namibia				1	1
	Nigeria		2	1	1 (1)	4 (1)
	Penang				1 (1)	1 (1)
	Uganda			1 (1)		1 (1)
	Zimbabwe			1 (1)		1 (1)
				5 (3)	1 (1)	7 (4)
ASIA	Bangladesh	1				1
	Cambodia	4 (4)	5			9 (4)
	China	87	296 (1)	249 (20)	170 (5)	802 (26)
	India	1 (1)		2	3 (2)	6 (3)
	Indonesia	1 (1)	11 (6)	21 (13)	8 (5)	41 (25)
	Korea	72 (32)	15	18	12 (1)	117 (33)
	Laos			1		1
	Malaysia	6		1		7
	Mongolia	5 (3)	2	2	1	10 (3)
	Myanmar		2 (1)	7 (4)	2 (1)	11 (6)
	Nepal			2		2
	Pakistan		1 (1)	1		2 (1)
	Philippines		1	1	1 (1)	3 (1)
	Singapore	1				1
	Sri Lanka	1				1
	Taiwan	3	7	13	29	52
	Thailand		6 (1)	15 (2)	30 (3)	51 (6)
	Turkmenistan		1 (1)			1 (1)
	Vietnam	1	3	1	11 (1)	16 (1)
EUROPE	Belgium				1	1
	Finland			1	3	4
	France				3	3
	Ireland	1				1
	Italy				3	3
	Germany				13 (2)	13 (2)
	Kosovo		1 (1)			1 (1)
	Poland				1 (1)	1 (1)
	Portugal				2	2
	Russia				21 (1)	21 (1)
	Spain				2	2
	Sweden				1	1
	Turkey		1	1	6	8
	Ukraine				1	1
MIDDLE EAST	Afghanistan		1 (1)			1 (1)
	Jordan			1		1
	Iran			1		1
	Iraq			2 (1)		2 (1)
	Syria			1		1
	Yemen				1 (1)	1 (1)
NORTH AMERICA	U.S.A		3 (1)		154	157 (1)
LATIN AMERICA	Argentina			1 (1)		1 (1)
	Brazil	1	1	1 (1)	3 (3)	6 (4)
	Colombia		1 (1)			1 (1)
	Costa Rica		1 (1)			1 (1)
	Cuba		1 (1)			1 (1)
	Ecuador		1 (1)			1 (1)
	Guatemala		1 (1)		1 (1)	2 (2)
	Mexico			2 (1)	3 (1)	5 (2)
	Panama		1 (1)			1 (1)
Total		185 (41)	365 (20)	357 (50)	494 (36)	1,401 (147)

() shows the number of international students funded by Ministry of Education, Culture, Sports, Science and Technology of Japan

International Researcher Exchange / University Fees

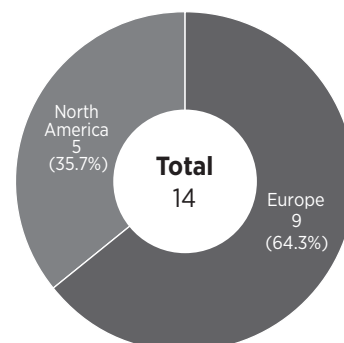
International Researchers at Chiba University

Asia	153
Europe	48
North America	12
Latin America	11
Oceania	4
Middle East	4
Africa	4
Total	236



Chiba Univ. Researchers Going Abroad

Asia	0
Europe	9
North America	5
Oceania	0
Latin America	0
Middle East	0
Africa	0
Others	0
Total	14



Due to the COVID-19 pandemic, Chiba University canceled every study abroad program and requested all students, faculties and staff members not to travel abroad to study or research.

University Fees

(FY 2021)

Classification		Entrance Examination Fee	Admission Fee	Tuition (per year)	
Undergraduate Students		17,000 yen	282,000 yen	Enrolled students before March 2020 535,800 yen	Enrolled students after April 2020 642,960 yen
	Master's Program	30,000 yen	282,000 yen	Enrolled students before March 2020 535,800 yen	Enrolled students after April 2020 642,960 yen
Graduate Students	Doctoral Program	30,000 yen	282,000 yen	Enrolled students before March 2020 520,800 yen	Enrolled students after April 2020 642,960 yen
	Law School	30,000 yen	282,000 yen	804,000 yen	
Research Students		9,800 yen	84,600 yen	346,800 yen	
Specially Registered Non-degree Students		9,800 yen	28,200 yen	14,800 yen/credit	
Exchange Students	From Partner Universities with Fee Waiver Agreement	Waived	Waived	Waived	
	Other than Above	Waived	Waived	14,800 yen/credit	
Exchange Research Students	From Partner Universities with Fee Waiver Agreement	Waived	Waived	Waived	
	Other than Above	Waived	Waived	346,800 yen	

As of February 2021; fees are subject to change. All values are in Japanese yen.

University Library

<https://www.il.chiba-u.jp/english/index.html>

Central Library

1-33, Yayoi-cho, Inage-ku, Chiba-shi, Chiba,
263-8522 Japan

E-mail fbc2258@office.chiba-u.jp

Inohana Library

1-8-1, Inohana, Chuo-ku, Chiba-shi, Chiba,
260-8671 Japan

Matsudo Library

648, Matsudo, Matsudo-shi, Chiba,
271-8510 Japan

The University Library provides various services and resources to support the research and educational activities of the University faculty, students, staff and the general public.

There are three libraries on three campuses: The Central Library on Ni-shi-Chiba campus, the Library of Health Sciences (Inohana Library) on Inohana campus and the Library of Horticultural Science (Matsudo Library) on Matsudo campus.

The Library holds 1.3 million volumes, 25,500 periodicals, and many non-printed materials. In addition, the library web site is the key resource for those on campus who research for information of their interest as well as providing access

to OPAC (Online Public Access Catalog), to various kinds of bibliographic databases, 20,000 full-text online journals, the University institutional repository, and other reference resources.

The Central Library reopened in 2012 under the concept of Academic Link, which aims to promote students' active learning, the new type of learning space, various contents for learning, and support by students, faculty members and librarians have been provided. The reconstruction of the Horticultural Science Library in Matsudo Campus was completed in 2019 to provide contemporary learning space and to accommodate the new learning support activities under the Academic Link concepts.

Statistics

		Central Lib.	Lib.of Health Sciences	Lib.of Horticultural Science	Total
Collections (as of March 31, 2021)	Books (Japanese)	653,187 vols.	119,198 vols.	54,900 vols.	827,285 vols.
	(Foreign)	330,787 vols.	121,638 vols.	14,120 vols.	466,545 vols.
	Electronic books	32,427 titles	32,442 titles	32,427 titles	32,442 titles
	Periodicals (Japanese)	9,866 titles	2,738 titles	3,088 titles	15,692 titles
	(Foreign)	5,814 titles	3,111 titles	878 titles	9,803 titles
	Electronic journals	20,029 titles	19,975 titles	19,923 titles	20,087 titles
Circulation (FY2020)	Number of visitors	109,264 users	21,123 users	10,999 users	141,386 users
	Days open	299 days	326 days	279 days	
	Volumes lent	110,895 vols.	19,287 vols.	4,474 vols.	134,656 vols.
Library cooperation (FY2020)	Copy orders to other libraries	1,520 cases	1,425 cases	58 cases	3,003 cases
	Copy requests from other libraries	1,442 cases	2,393 cases	195 cases	4,030 cases
Accommodation	Building Space	15,808 m ²	3,950 m ²	973 m ²	20,731 m ²
	Seats	1,552 seats	331 seats	169 seats	2,052 seats

Library access was restricted in FY2020 due to COVID-19.



Schools and Center Attached to the Faculty of Education

Nishi-Chiba Campus

To meet the diverse educational demands and to help in solving the problems of a rapidly changing society, the Faculty of Education includes the

following four affiliated schools and one center.

The Elementary School, The Junior High School, The School for Children

with Special Needs, The Kindergarten, Attached Center for Teacher Education and Development.

Kindergarten Attached to the Faculty of Education

(as of May 1, 2021)

Age	No. of Classes	Enrollment
3-year Olds	1	28
4-year Olds	2	56
5-year Olds	2	56
Total	5	140

Elementary School Attached to the Faculty of Education

Grade	No. of Classes	Enrollment
1	3	105
2	3	105
3	3	105
4	3 (1)	105 (15)
5	3 (1)	105 (15)
6	3 (1)	105 (15)
Total	18 (3)	630 (45)

The figures in brackets indicate the number of classes for returnee students and the approximate number of returnee students.

Junior High School Attached to the Faculty of Education

Grade	No. of Classes	Enrollment
1	4	140 (12)
2	4	140 (12)
3	4	140 (12)
Total	12	420 (36)

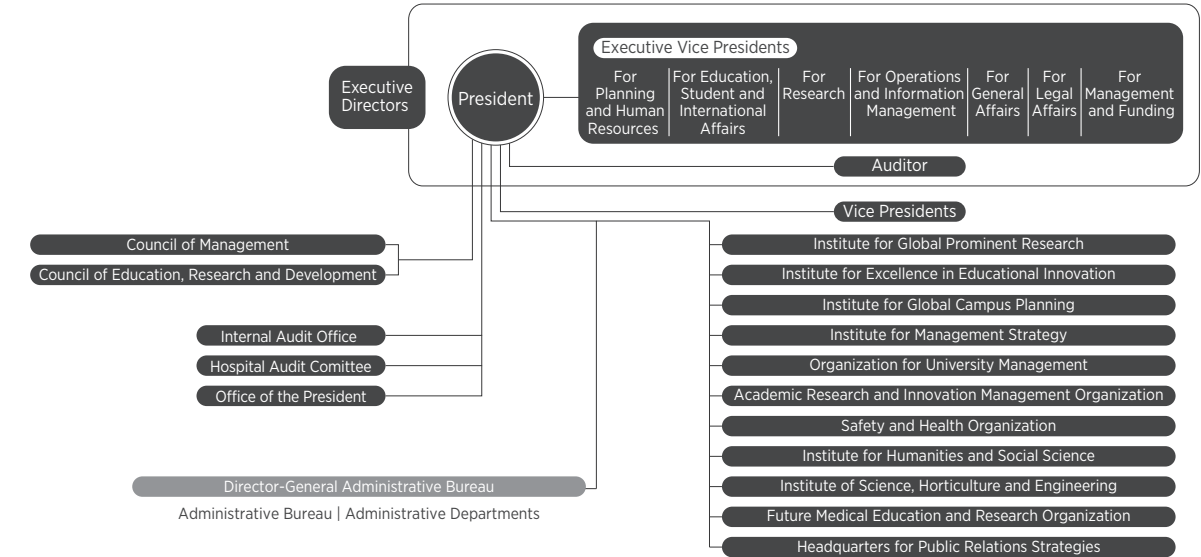
The figures in brackets indicate the approximate number of returnee students.

School for Children with Special Needs Attached to the Faculty of Education

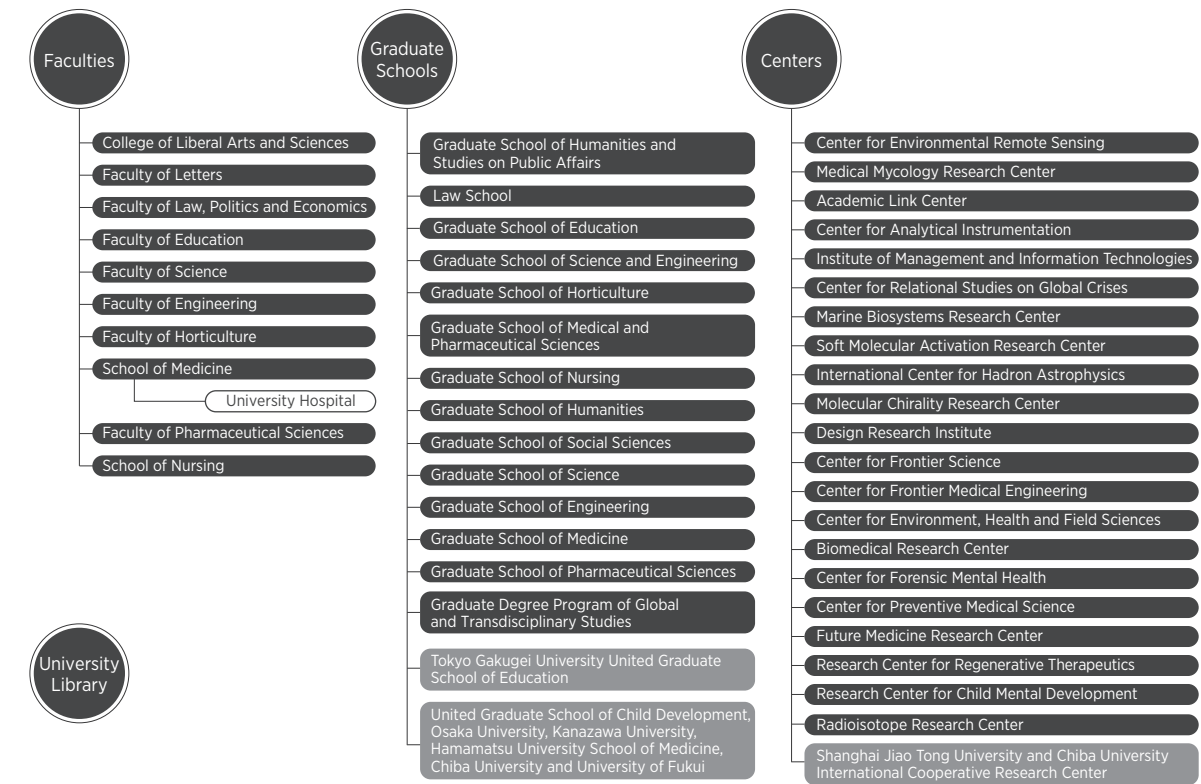
Section	Grade	No. of Classes	Enrollment
Elementary School Section	Low, Middle, High	3	18
Junior High School Section	1 2 3	3	18
High School Section	1 2 3	3	24
Total		9	60

Organization Chart

Management Organization



Education and Research Organization



Administrative Staff

Executive Directors

President	NAKAYAMA Toshinori
Executive Vice President for Planning and Human Resources	NAKAYA Haruaki
Executive Vice President for Education, Student and International Affairs	WATANABE Makoto
Executive Vice President for Research	FUJIE Koichi
Executive Vice President for Operations and Information Management	KIMPARA Kyoko
Executive Vice President for General Affairs / Director-General of Administrative Bureau	TESHIMA Hideo
Executive Vice President for Legal Affairs	HORI Yutaka
Executive Vice President for Management and Funding	IWASAKI Toshihiro
Auditor	SUMIKURA Eiji
Auditor (External)	YAMAMOTO Tomoko

Vice Presidents

for Educational Reform	OZAWA Hiroaki
for Education	TAKEUCHI Hiroya
for Education, Student and International Affairs	SATO Yukihiro
for Admissions	SATO Satoshi
for Research	SAITO Tetsuichiro
for Research	YANAGISAWA Akira
for Research and Academic-Industrial Collaboration	TAKEI Masahiro
for Research and Regional Cooperation	MATSUOKA Nobuhiro
for University Hospital	YOKOTE Koutaro
for Attached Schools	KOMIYAMA Tomoyoshi
for Public Relations, Harassment Prevention and Response	NAKAMURA Nobue

Deans

College of Liberal Arts and Sciences/Graduate School of Global and Transdisciplinary Studies	OZAWA Hiroaki
Faculty of Letters / Graduate School of Humanities	OKABE Yoshiyuki
Faculty of Law, Politics and Economics / Graduate School of Social Sciences	SATO Eisaku
Faculty of Education / Graduate School of Education	KOMIYAMA Tomoyoshi
Faculty of Science / Graduate School of Science	SATO Toshinori
Faculty of Engineering / Graduate School of Science and Engineering / Graduate School of Engineering	SATO Yukihiro
Faculty of Horticulture / Graduate School of Horticulture	MATSUOKA Nobuhiro
School of Medicine / Graduate School of Medicine	MATSUBARA Hisahiro
Faculty of Pharmaceutical Sciences / Graduate School of Pharmaceutical Sciences	MORIBE Kunikazu
School of Nursing / Graduate School of Nursing	SUWA Sayuri
Graduate School of Humanities and Studies on Public Affairs	YAMADA Masaru
Law School	SHIMOI Yasushi
Graduate School of Medical and Pharmaceutical Sciences	SAITO Tetsuichiro

Chair of Graduate Program

Graduate Degree Program of Global and Transdisciplinary Studies	KAMISATO Tatsuhiko
-----------------------------------------------------------------	--------------------

Directors

University Library / Academic Link Center	TAKEUCHI Hiroya
University Hospital	YOKOTE Koutaro
Center for Environmental Remote Sensing	HATTORI Katsumi
Medical Mycology Research Center	SASAGAWA Chihiro
Center for Analytical Instrumentation	NISHIDA Atsushi
Institute of Management and Information Technologies	IMAIZUMI Takashi
Center for Frontier Science	MANABE Yoshitsugu
Center for Relational Studies on Global Crises	SAKAI Keiko
Marine Biosystems Research Center	TOGASHI Tatsuya
Soft Molecular Activation Research Center	ARAI Takayoshi
International Center for Hadron Astrophysics	YOSHIDA Shigeru
Molecular Chirality Research Center	OMATSU Takashige
Design Research Institute	UEDA Akira
Center for Frontier Medical Engineering	HANEISHI Hideaki
Center for Environment, Health and Field Sciences	TAKAGAKI Michiko
Biomedical Research Center	HATANO Masahiko
Center for Forensic Mental Health	IYO Masaomi
Center for Preventive Medical Sciences	MORI Chisato
Future Medicine Research Center	HANAOKA Hideaki
Research Center for Regenerative Therapeutics	MOTOHASHI Shinichiro
Research Center for Child Mental Development	SHIMIZU Eiji
Plant Molecular Science Center	SAITO Kazuki
Radioisotope Research Center	UEHARA Tomoya
Shanghai Jiao Tong University and Chiba University / International Cooperative Research Center	LIU Hao

Campus Locations and General Contacts

NISHI-CHIBA CAMPUS

1-33, Yayoi-cho, Inage-ku, Chiba-shi, Chiba,
263-8522 Japan

- College of Liberal Arts and Sciences
- Faculty of Letters
- Faculty of Law, Politics and Economics
- Faculty of Education
- Faculty of Science
- Faculty of Engineering
- Graduate School of Humanities and Studies on Public Affairs
- Law School
- Graduate School of Education
- Graduate School of Science and Engineering
- Graduate Degree Program of Global and Transdisciplinary Studies
- University Library -Central Library
- Center for Environmental Remote Sensing
- Center for Analytical Instrumentation
- Institute of Management and Information Technologies
- Center for Frontier Science
- International Center for Hadron Physics
- Academic Link Center
- Radioisotope Research Center

International Affairs Division (General Student Service Center)

Tel : +81-43-290-2043

Fax : +81-43-290-2041

E-mail : kokusai@office.chiba-u.jp

International Student Division (General Student Service Center)

For international students and applicants from overseas

Tel : +81-43-290-2193, 2197

Fax : +81-43-290-2198

E-mail : dge2195@office.chiba-u.jp

Directions

A few minute walk from the North exit of JR Nishi Chiba Station (Sobu Local Line) or 7-minute walk from Midoridai Station (Keisei Line)

INOHANA CAMPUS

1-8-1, Inohana, Chuo-ku, Chiba-shi, Chiba,
Japan

260-8670 (for Medicine, Biomedical)

260-8671 (for University Library)

260-8672 (for Nursing)

260-8673 (for MMRC)

260-8675 (for Pharmaceutical Sciences)

260-8677 (for University Hospital)

Tel +81-43-222-7171

- School of Medicine
- Faculty of Pharmaceutical Sciences
- School of Nursing
- Graduate School of Medicine
- Graduate School of Medical and Pharmaceutical Sciences
- Graduate School of Nursing
- Medical Mycology Research Center
- Biomedical Research Center
- Center for Forensic Mental Health
- Center for Preventive Medical Sciences
- Future Medicine Research Center
- Research Center for Regenerative Therapeutics
- Research Center for Child Mental Development
- University Library -Library of Health Sciences
- University Hospital

Directions

Take Keisei Bus bound for Chibadaigaku Byoin (Chiba University Hospital) or Minami Yahagi from bus stop #7 at the East exit of JR Chiba Station/ Keisei Chiba Station (Keisei Line) and get off at the following bus stop:

Inohana Campus: Chibadaigaku Kangogakubu Iriguchi (Chiba University Faculty of Nursing Entrance), or Chibadaigaku Igakubu/Yakugakubu Iriguchi (Chiba University School of Medicine/Faculty of Pharmaceutical Sciences Entrance)

University Hospital: Chibadaigaku Byoin (Chiba University Hospital)

MATSUDO CAMPUS

648, Matsudo, Matsudo-shi, Chiba,
271-8510 Japan

Tel +81-47-308-8706

Fax +81-47-308-8720

- Faculty of Horticulture
- Graduate School of Horticulture
- University Library -Library of Horticultural Sciences

Directions

15-minute walk from the East exit of Matsudo Station (JR Joban Line or Shin-Keisei Line)

KASHIWANOHA CAMPUS

6-2-1, Kashiwanoha, Kashiwa-shi, Chiba,
277-0882 Japan

Tel +81-4-7137-8000

Fax +81-47-137-8008

- Center for Environment, Health and Field Sciences

Directions

5-minute walk from the West exit of Kashiwanoha-Campus Station (Tsukuba Express)

SUMIDA SATELLITE CAMPUS

1-19-1, Bunka, Sumida-ku, Tokyo

131-0044 Japan

E-mail : sumida-jimu@chiba-u.jp

- Design Research Institute (dri)

Directions

5-minute walk from the Omurai Station (Tobu Kameido Line)

AD ALTIORA SEMPER
UNIVERSITAS CHIBA

2021
2022

CHIBA UNIVERSITY

1-33, Yayoi-cho, Inage-ku, Chiba-shi, Chiba, 263-8522 Japan

www.chiba-u.ac.jp/e

Copyright (C) 2021-2022 Chiba University. All Rights Reserved

